

# GENERA OF ARESCHOUGIACEAE AT A GLANCE, 2<sup>ND</sup> EDITION



*A. congesta* has cylindrical branches



*A. stuartii*, *A. ligulata* have winged branches

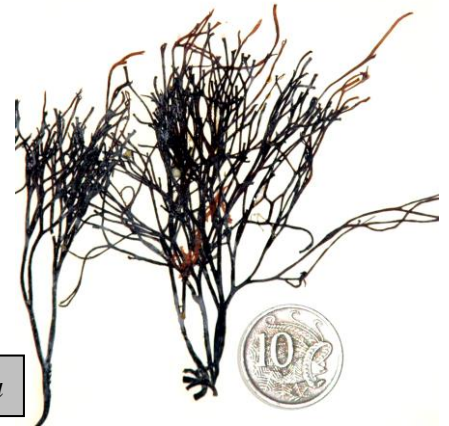
*Areschougia* – 3 species



*Tikvahielli*



*Melanema dumosum*



*Sarconema*



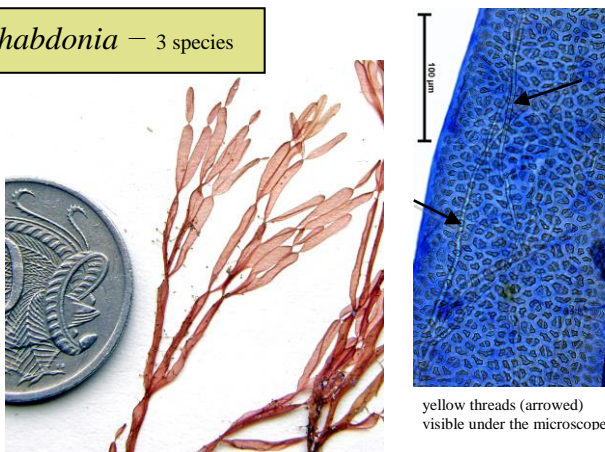
*Solieria* – 3 species

tips pointed; many threads visible under the microscope radiate from the tip

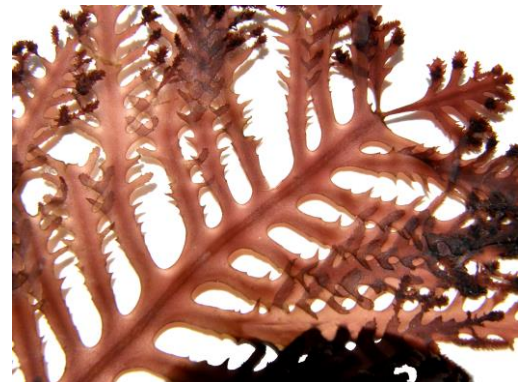
*Erythroclonium* – 4 species



*Rhabdonia* – 3 species



yellow threads (arrowed) visible under the microscope



*Callophycus* – 5 species