



MACRO
PLANT

foliose

Techniques needed and plant shape

Classification

Phylum: Chlorophyta; Order: Ulvales; Family: Ulvaceae

***Descriptive name**

stalked sea lettuce

Features



plants green, 50-100mm tall, blades arising from a holdfast, numerous, branched, *spoon-shaped*, edges *without* microscopic teeth, on *stalks* produced by loss of young blade edges

Special requirements



view microscopically

1. surface of blades with *lines* of cells that lie in *2 directions*
2. a cross section of the blade base shows a *thick central mass of rhizoids* between 2 sheets of cells

Occurrences

Yorke Peninsula, S. Australia to Victoria

Usual Habitat

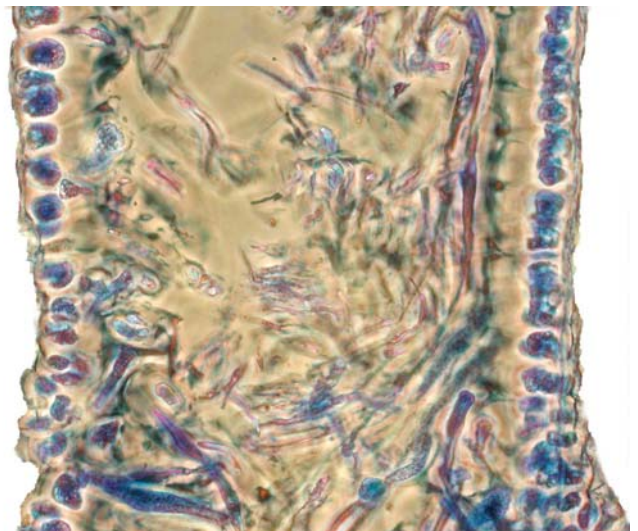
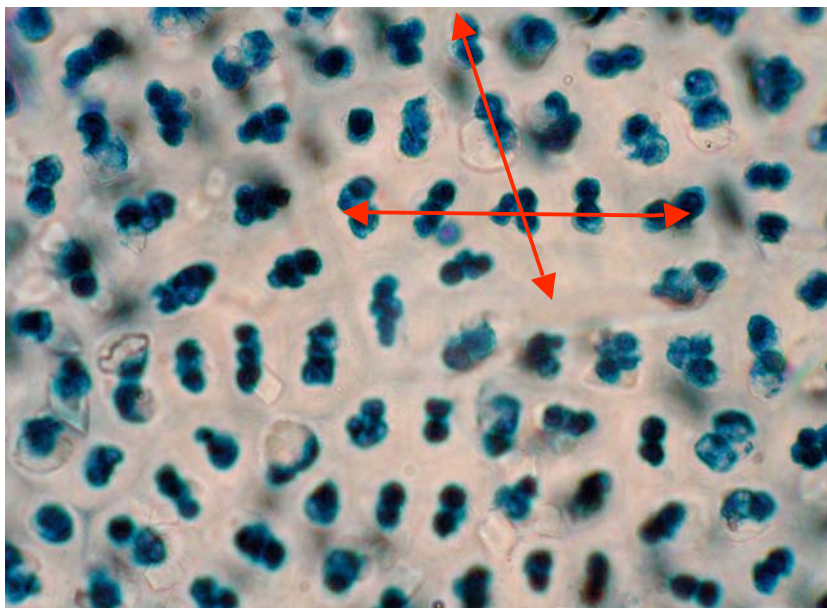
in sheltered to moderate wave conditions; reports from New Zealand are questionable

Similar Species

similar to some forms of *Ulva australis*

Description in the Benthic Flora Part I, pages 144-48

Details of Anatomy



Ulva spathulata stained blue and viewed microscopically

1. surface view of cells from near the top of the blade. Cells are equal-sided and lie in lines in 2 directions (shown by arrows) (slide 6455)
2. cross section through the basal stalk of a blade, showing the 2 cell layers and thick middle layer penetrated by threadlike rhizoids (slide 6457)



Two magnifications of *Ulva spathulata* Papenfuss, (A15224b) from Point Sinclair, S Australia, in the lower intertidal of rough reefs

* Descriptive names are inventions to aid identification, and are not commonly used
"Algae Revealed" R N Baldock, S Australian State Herbarium, October 2003, additions made June 2006, October 2009