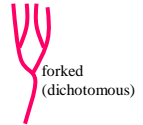
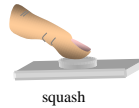


Techniques needed and shape



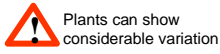
Classification

Phylum: Rhodophyta; Order: Gigartinales; Family: Nemastomataceae

*Descriptive name

forked, red slippery-weed

Features



plants 40-350mm tall, small and red-brown in shallow waters, larger and redder in deeper waters; all plants slimy, forked, flat-branched, lower branches **3-5mm wide**, compressed, some occasionally with a few short side branches from the edges

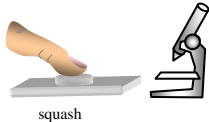
Occurrences

New Zealand. West Coast, S Australia to Victoria and Tasmania
in deep water or shaded shallows

Usual Habitat

Special requirements

gently squash tissue under a coverslip and view microscopically to find



- central (medulla) masses of intertwined threads; outer layers of branched chains of egg-shaped cells facing outwards, the inner cells large, packed with starch grains, grading outwards to small, coloured surface cells
- in sporangial plants: scattered tetrasporangia in outer layers, divided irregularly in a cross pattern (cruciate)
- in female plants: patches of large carposporangia in outer layers

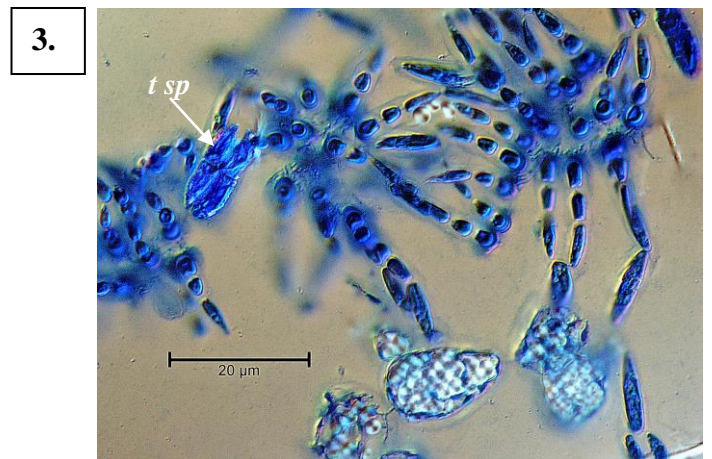
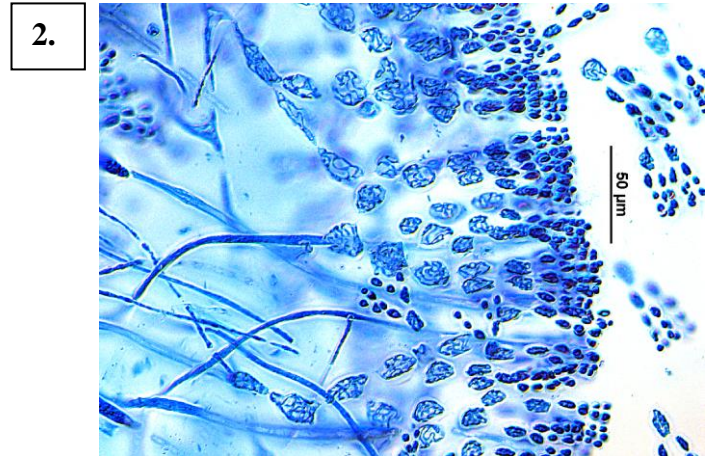
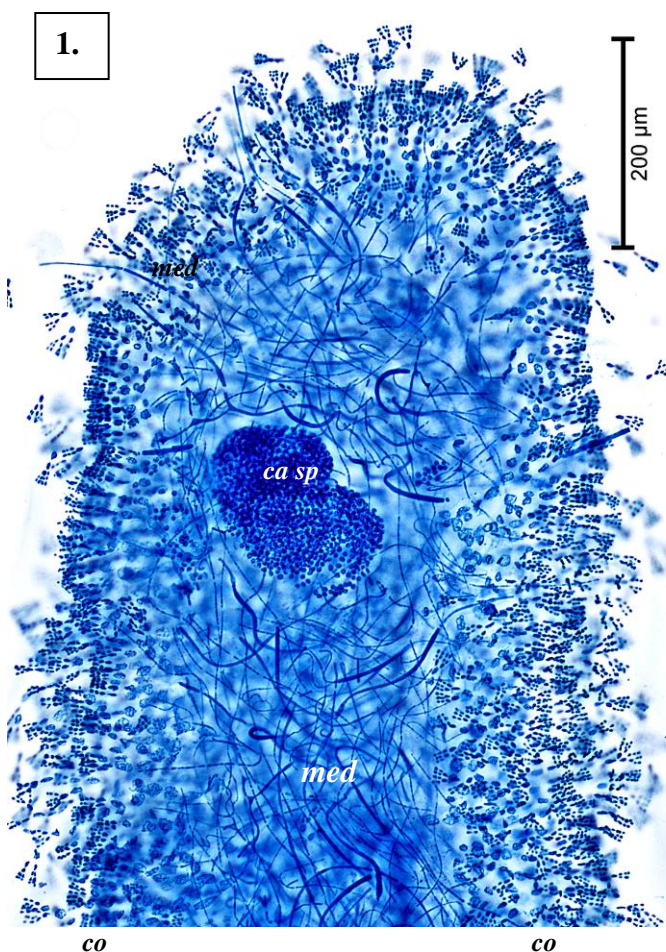
Similar Species

when young or with few fringes, *Tsengia comosa* may resemble *T. feredayae*

Description in the Benthic Flora

Part IIIA, pages 275, 276-277

Details of Anatomy



Tsengia feredayae: tissue squashes stained blue and viewed microscopically (#1, 2#, slide 15065; #3 slide 13043)

1. lengthwise view, female plant: core (medulla, **med**) of threads, outer layers (cortex, **co**) of branched chains of egg-shaped cells facing outwards (some detached); patch of carposporangia (**ca sp**)
2. detail of branch edge: forked tufts of cortical cells, consisting of smaller outer and larger inner cells
4. detached cortical tufts from a deep water specimen: single tetrasporangium (**t sp**) divided in a cross pattern (cruciate); lower cortical cells are packed with bright starch grains, large in this deep water specimen

4.

5.



6.

7.



Tsengia feredayae (Harvey) Womersley & Kraft from South Australia

- 4, 5. two magnifications of specimens (A22431) in reef pools, Wanna, West Coast, showing the dark brown colour and small size of shallow water plants
- 6, 7. two magnifications of a specimen (A46998) from 15m deep near Cape Northumberland