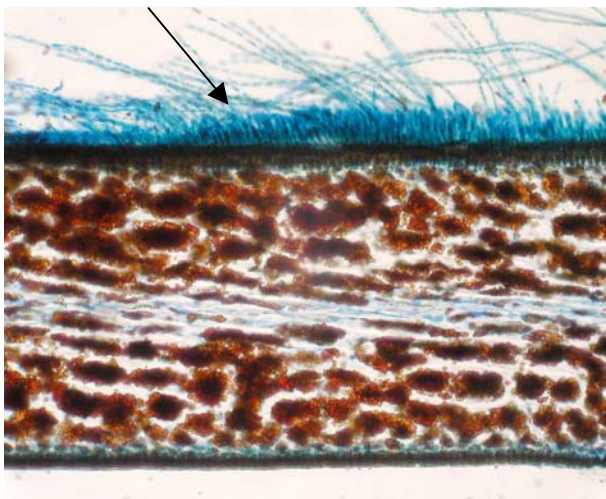


Phylum: Chlorophyta

Family: Ulvellaceae

50.300

This is a Family of thread-like algae forming fuzzy patches on rocks or larger algae. Chloroplasts have unusual colours (red or yellow-green). Only *Sporocladopsis novae-zelandiae* that is **yellow-green** and **grows on larger brown algae** is represented in southern Australia. (*Sporocladopsis* is described as *Pilinia* in the Chroolepidaceae in Womersley, part I.)



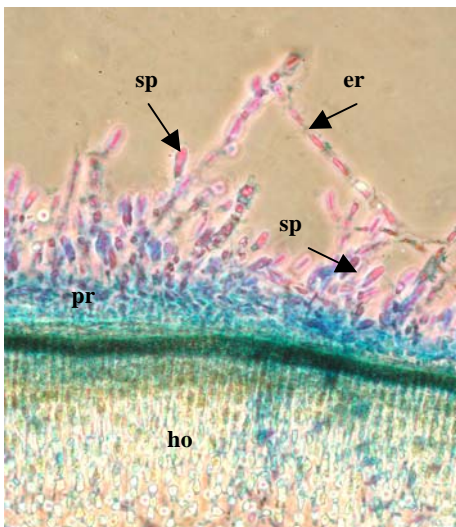
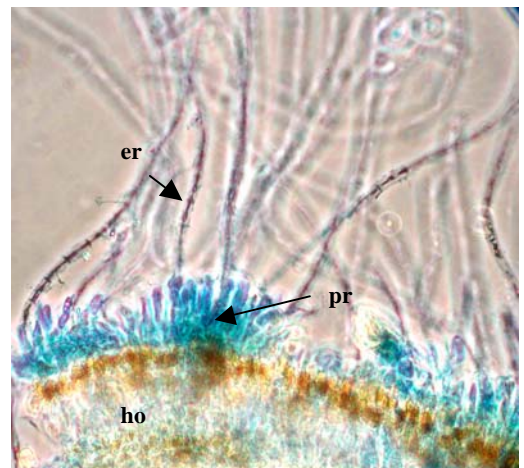
Above:
A slice across a blade of the large brown alga, *Scytothalia*, showing a patch of blue-stained *Sporocladopsis novae-zelandiae* growing on the top surface (arrowed).

7468

Below, right:

A slice through a large brown alga *Ecklonia* host (**ho**) showing a blue-stained *Sporocladopsis* patch on the upper surface. The prostrate (**pr**) and erect parts (**er**) characteristic of the genus are shown

7467



Above, left
Detail through a slice of a large brown alga, *Durvillea*, (**ho**). The prostrate (**pr**) and erect parts (**er**) of a patch of *Sporocladopsis* on the upper surface both bear sporangia (**sp**)

7459



Above, right:

Detail of a detached erect filament of *Sporocladopsis* showing sporangia (**sp**) arising from each of the several end cells

7459



Sporocladopsis novae-zelandiae V J Chapman
(formerly *Pilinia novae-zelandiae* (Chapman)
Papenfuss & Fan ex Papenfuss in the Flora Part I),
(A15109), on *Myriodesma harveyanum*, sub-littoral
fringe, Cape Carnot, S. Australia, 1951. Some plants
are shown arrowed.