

*Schizoseris perriniae*  
(Lucas) Womersley

45.880

Techniques needed and shape



MACRO  
PLANT



Classification

Phylum: Rhodophyta; Family: Delesseriaceae; Tribe: Nitophylloideae;  
Group: Myriogramme

\*Descriptive name

stalked frilly blades

Features



plants rose-red, 80-200mm tall, with thick *forked stalks* continuing into membranous, blades as a coarse *central vein* and alternating, *forked* side veins; blades up to 150mm x 80mm in size with *frilly*, wavy edges

Occurrences

restricted to SE Tasmania

Usual Habitat

from shallow to deep water (31m)

Similar Species



*Schizoseris hymenena*. This has forked veins but does not have a prominent stalk nor solid midrib. Reproduction in *S. perriniae* is unknown and this species may merely be old plants of *S. hymenena* that have a prominent stalk that grows new blades perennially

Description in the Benthic Flora

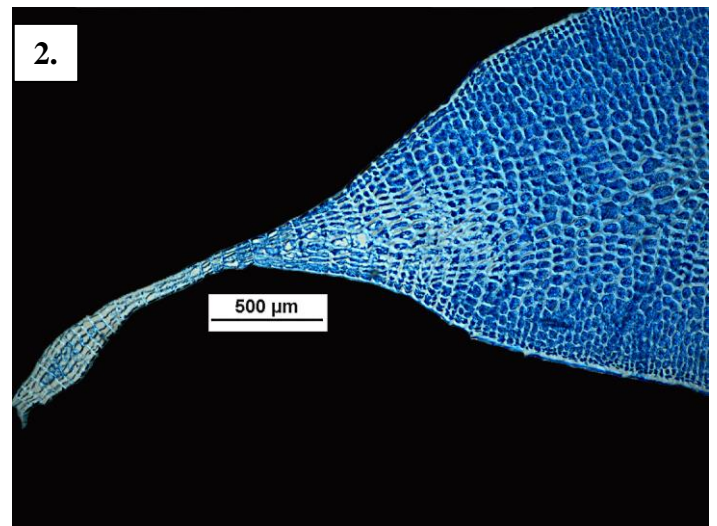
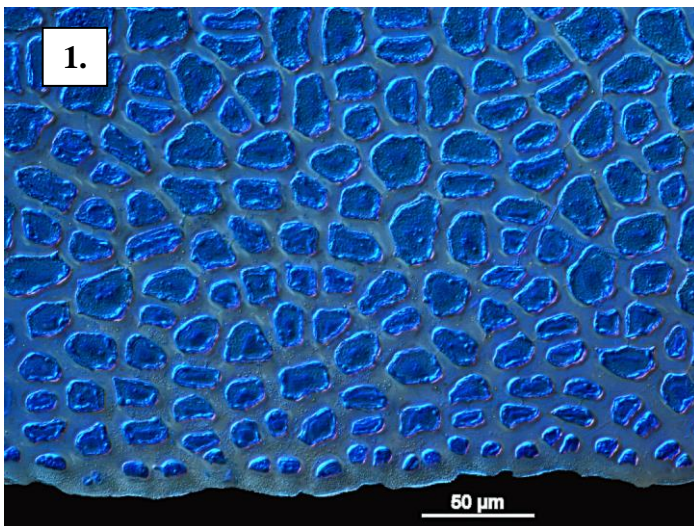
Part IIID, pages 117-118

Special Requirements



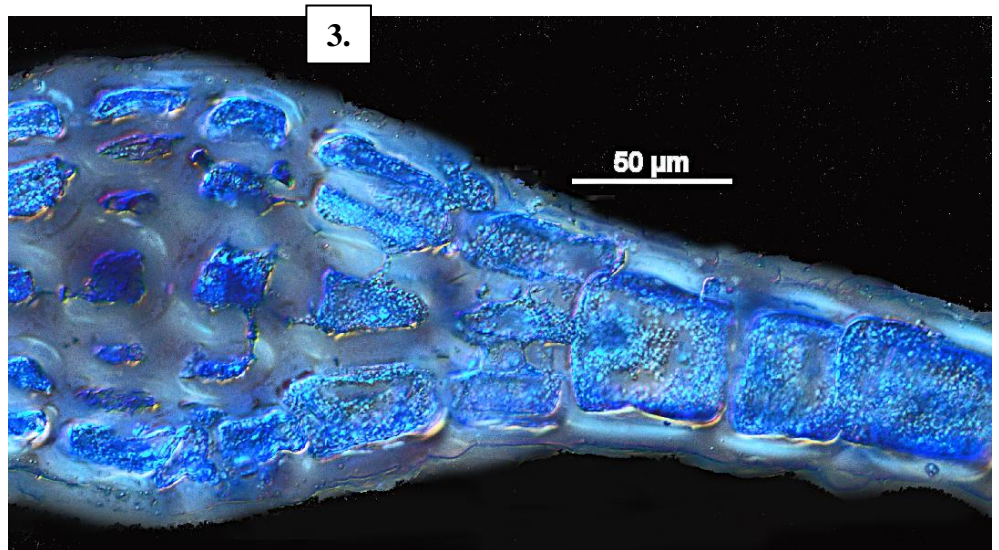
1. view blades microscopically to find a fringe of small dividing cells,
2. cut a cross sections to find blades are *one cell thick* except at veins and stalks where cells are in tiers

Details of Anatomy



*Schizoseris perriniae* (Lucas)  
Womersley stained blue and  
viewed microscopically

1. blade edge, surface view: small edge-cells that divide and continue the growth of the blade (slide 17665)
2. cross section through a stalk: blade mainly 1 cell layer thick; tiers of cells in the stalk (slide 17661)
3. cross section through a small vein and a portion of a blade a single cell thick (slide 17661)



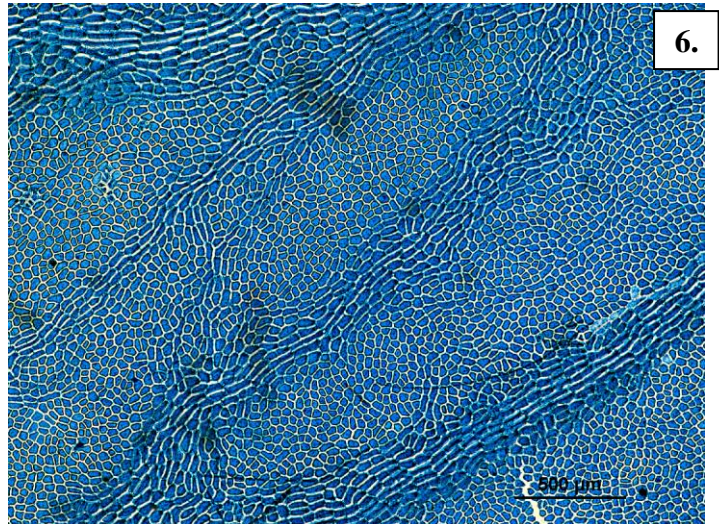
4.



5.



6.



- 4, 5. two magnifications of *Schizoseris perriniae* (Lucas) Womersley (A<sub>64256</sub>): prominent stalks, midribs, fine veins and ruffled blades
6. surface microscopic view of a part of a blade stained blue (slide 17665): veins forked