

Schizoseris bombayensis
(Børgesen) Womersley

45.880

Techniques needed and shape



MACRO
PLANT



Classification

Phylum: Rhodophyta; Family: Delesseriaceae; Tribe: Nitophylloideae;
Group: Myriogramme

*Descriptive name

small red Vein-blades

Features



plants red-brown, fading to pink, fan-shaped, 10-50mm tall, of thin, filmy, flat-branched blades with **prominent**, broad, thick, forked mid-line veins; basal parts about 2mm wide, expanding to 30mm wide blades with **ruffled edges**

Variations

occasional tufts of rhizoids may occur at the edges of the blades

Occurrences

possibly widespread in the Indian Ocean. Also from S USA and Hawaii. In Australia, from the Queensland, Lord Howe I., Port Phillip Bay, Victoria and SE Tasmania on rock and shells, in shallow to deep water

Usual Habitat

Similar Species

Myriogramme, but there are no obvious mid-line veins in that genus

Description in the Benthic Flora

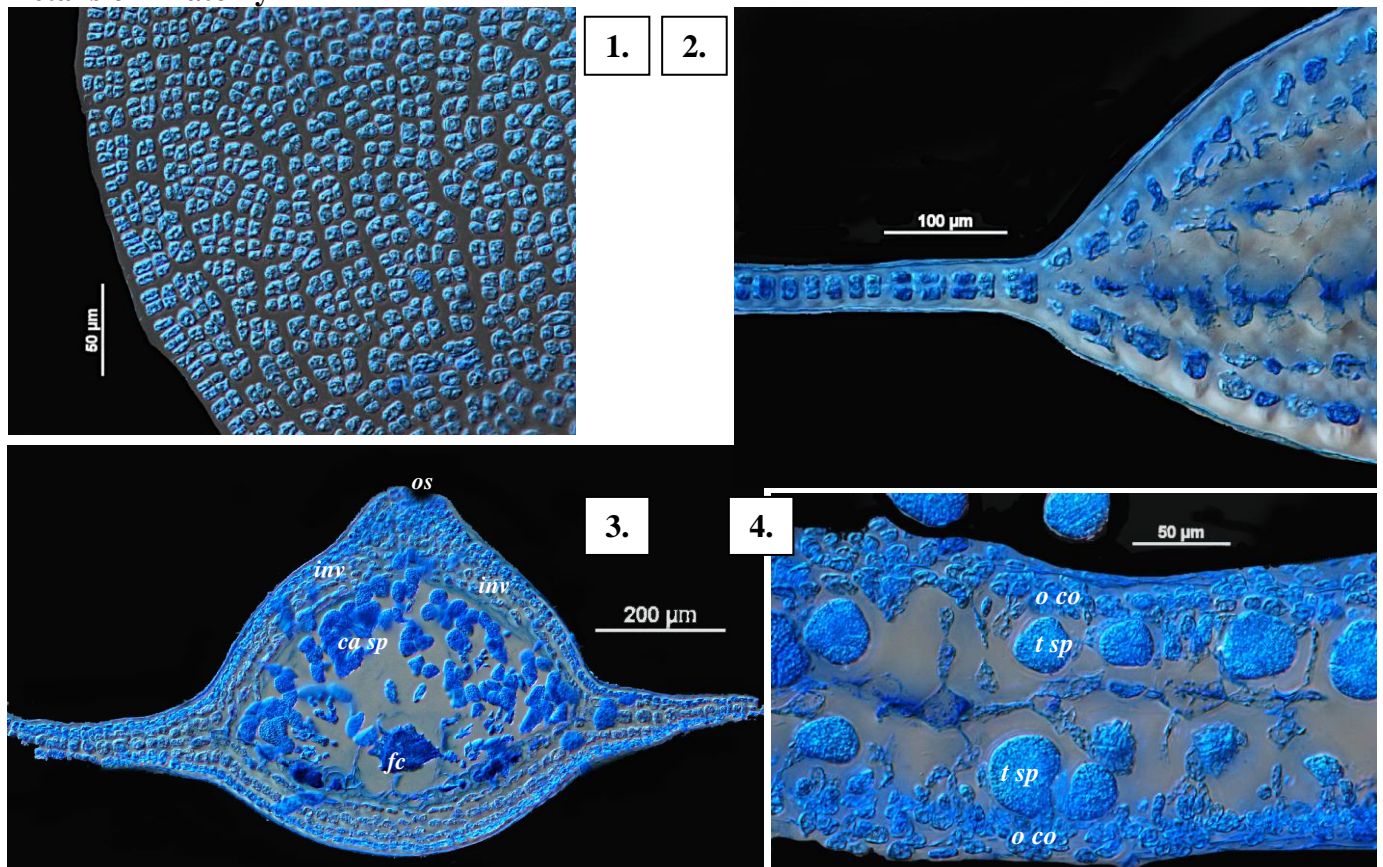
Part IIID, pages 112-114

Special Requirements

view microscopically to find:

- in surface views: blades are generally **one cell thick**, except at mid-line veins and reproductive regions; dividing cells are in irregular **lines**
- in cross sections through scattered, swollen, pustulate, developing female structures (cystocarps): large basal (fusion) cells, spreading branched threads (gonimoblast), terminal chains of sporangia (carposporangia), thin wrappings (involucre) of threads, slight necks, and single small openings (ostioles)
- in sporangial plants: scattered, irregular tetrasporangia on **both** sides of blades, **covered** by cells of the outermost layer (cortex)

Details of Anatomy



Schizoseris bombayensis stained blue and viewed microscopically:

1. surface view of a blade edge (slide 18311): fringe of many, paired, dividing cells; cells in irregular lines
2. cross section through part of a vein (slide 18308): blade (to the left) generally one cell thick, vein with rows of inner large and outer small cells
3. cross section through a cystocarp (slide 18309): fusion cell (*fc*), thin sheath (involucre, *inv*), sporangia (*ca sp*), opening (ostiole, *os*)
4. cross section through a spore plant blade (slide 18310): tetrasporangia (*t sp*) covered by outer (cortical) cells (*o co*)

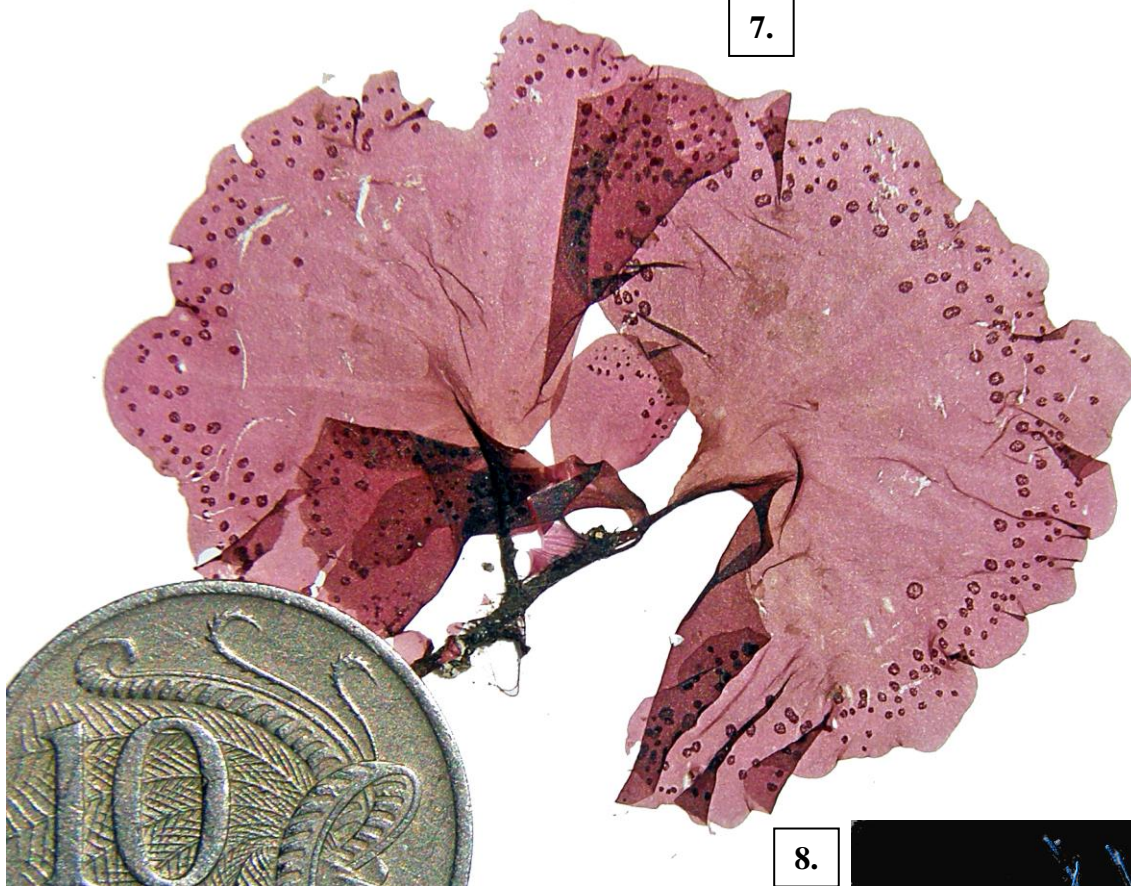
5.



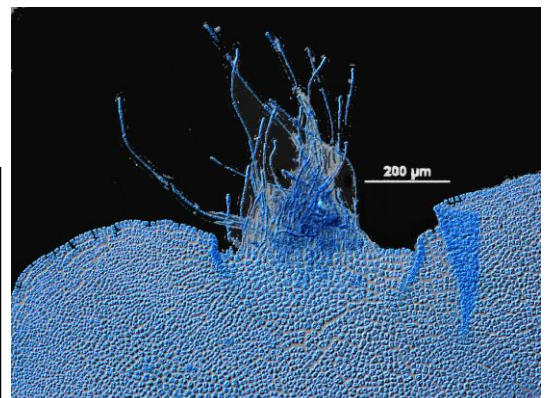
6.



7.



8.



Schizoseris bombayensis (Børgesen) Womersley from Williamstown
Victoria, 5-6m deep

- 5, 6. specimens A68032, unstained and stained blue with prominent broad, forked midribs, and pustule-like patches of sporangia
- 7. specimen A68330 with prominent sporangial patches (sori)
- 8. specimen stained blue and viewed microscopically: tuft of rhizoids on the ruffled edge (slide 18311)