



Techniques needed and plant shape

Classification

Phylum: Chlorophyta; Order: Cladophorales; Family: Cladophoraceae

\*Descriptive name

arced mangrove threads, (referring to the regular curved segments)

Features

plants consists of green, felty mats or loose, entangled threads

Special requirements



view the threads microscopically to find

1. relatively **regular** curved segments separated by **short rhizoids**, characteristic of this species
2. threads **unbranched**, cells **box-shaped**; L/B dimensions < 2
3. chloroplasts **net-like** with several to many pyrenoids

Occurrences

New Zealand. In southern Australia, from Outer Harbour and the Port River estuary

Usual Habitat

on mangroves in the mid intertidal

Similar Species

other thread-like (filamentous) algae such as *Ulothrix* (but that has a parietal chloroplast — one that partly encircles the inside of the cell wall); *Cladophora* (but that has branched filaments) or *Chaetomorpha* (but the threads are wider in that genus)

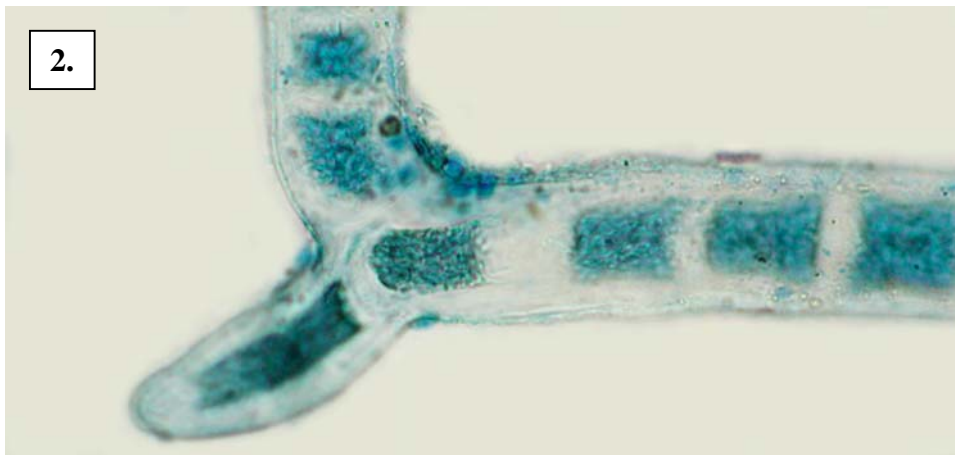
Description in the Benthic Flora Part I, pages 169, 170

Details of Anatomy

1.



2.



*Rhizoclonium curvatum* stained blue and viewed microscopically at different magnifications

1. curved segments with rhizoids at the junctions (slide 6797)
3. detail of the box-shaped cells characteristic of this species and a rhizoid (slide 6797)



3. *Rhizoclonium curvatum* Chapman, (A52647), on mangrove stems in the mid-intertidal, Garden Island, S Australia

4. dissected threads stained blue and viewed microscopically, showing the curved segments with rhizoids at the junctions (slide 6789)

\* Descriptive names are inventions to aid identification, and are not commonly used

“Algae Revealed” R N Baldock, S Australian State Herbarium, October 2003