



## **Rhizoclonium species at a glance**

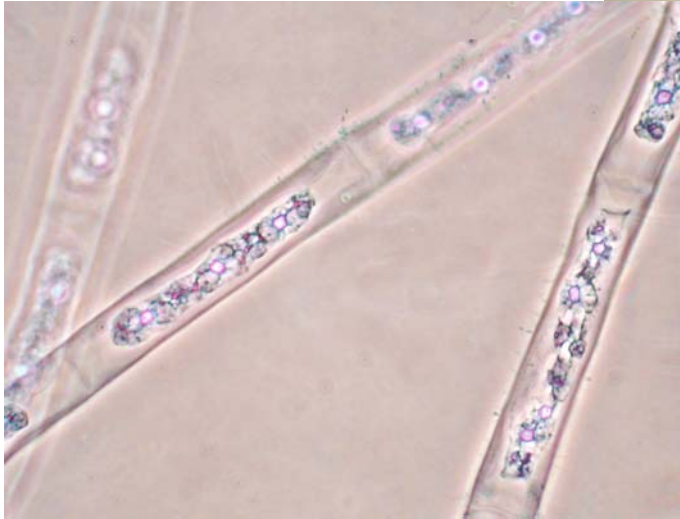
(see Womersley, Part I, page 167-170 for full descriptions)

Both *Rhizoclonium* and *Chaetomorpha* form tangled mats of unbranched threads with net-like chloroplasts. *Rhizoclonium* threads are finer (10-45µm wide compared to *Chaetomorpha* where threads are > 60µm wide)

Correct identification of species requires microscope examination of plants to determine:

1. **sizes** of cells and cell **proportions** (length to breadth or L/B ratio)
2. the position of **rhizoids**

### **I. Elongate cells usually without rhizoids**

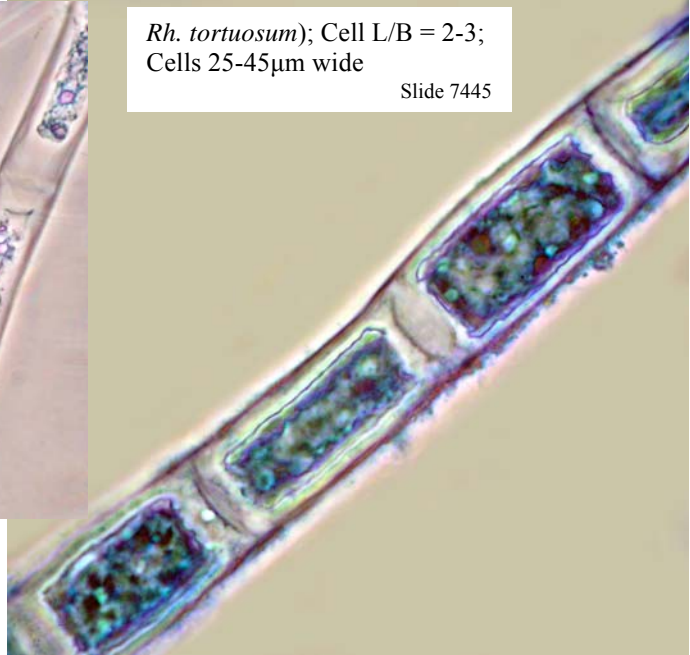


*Rh. implexum*  
Cell L/B = 2-6; Cells 16-22µm wide

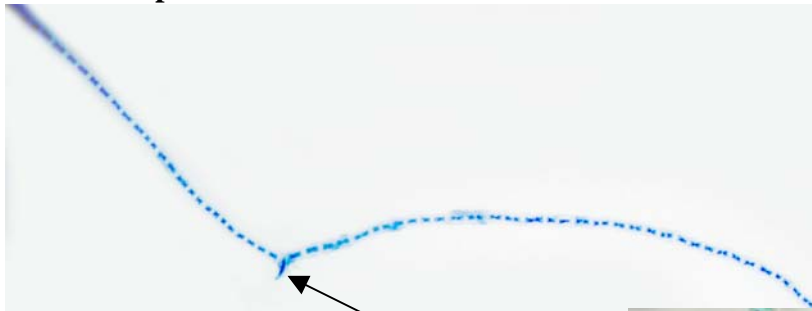
Slide 6792

*Rh. tortuosum*); Cell L/B = 2-3;  
Cells 25-45µm wide

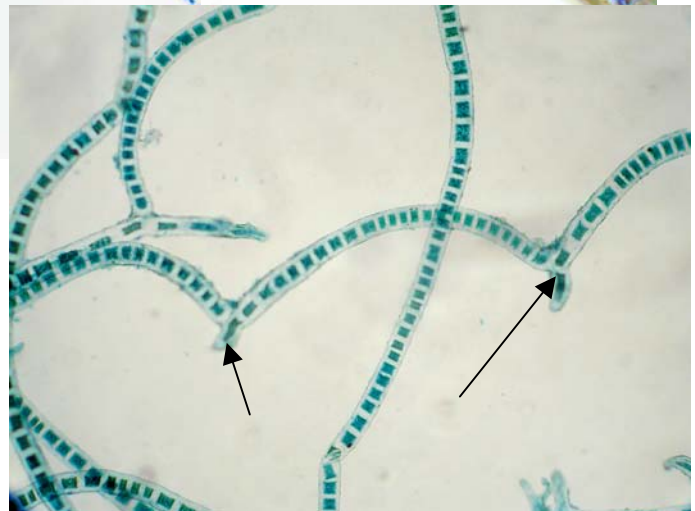
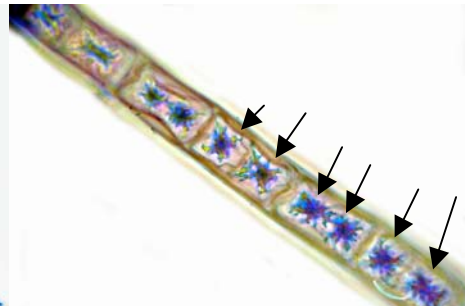
Slide 7445



### **II. Box-shaped cells often with rhizoids**



*Rh. riparium*  
Threads with **irregularly-placed** rhizoids (one arrowed)  
Cell L/B = 1-1.5 (image RHS top); Cells 16-22µm wide  
Slide 7447



*Rh. curvatum*  
Threads with **regularly-placed**  
rhizoids (2 arrowed)  
Cell L/B = 1-1.5  
Cells 24-32µm wide  
Slide 6789