

Padina fraseri
(Greville) Greville

34.390

Techniques needed and plant shape



Classification

Phylum: Phaeophyta; Family: Dictyotaceae; Tribe: Zonarieae

***Descriptive name**

rolled-edge fan-plant

Features

1. plants medium to dark brown, **fan-shaped** blades when young becoming slashed later into **wedge-shaped** pieces
2. blade edges **rolled** upwards and inwards, hairs prominent, in concentric bands on **both** sides of the blades



Variations

Special requirements

1. view the **rolled edge** of blades
2. slice the blade across to view the **3 rows** of cells. The **innermost** row has the largest cells



Occurrences

from Victoria N Tasmania to S NSW

Usual Habitat

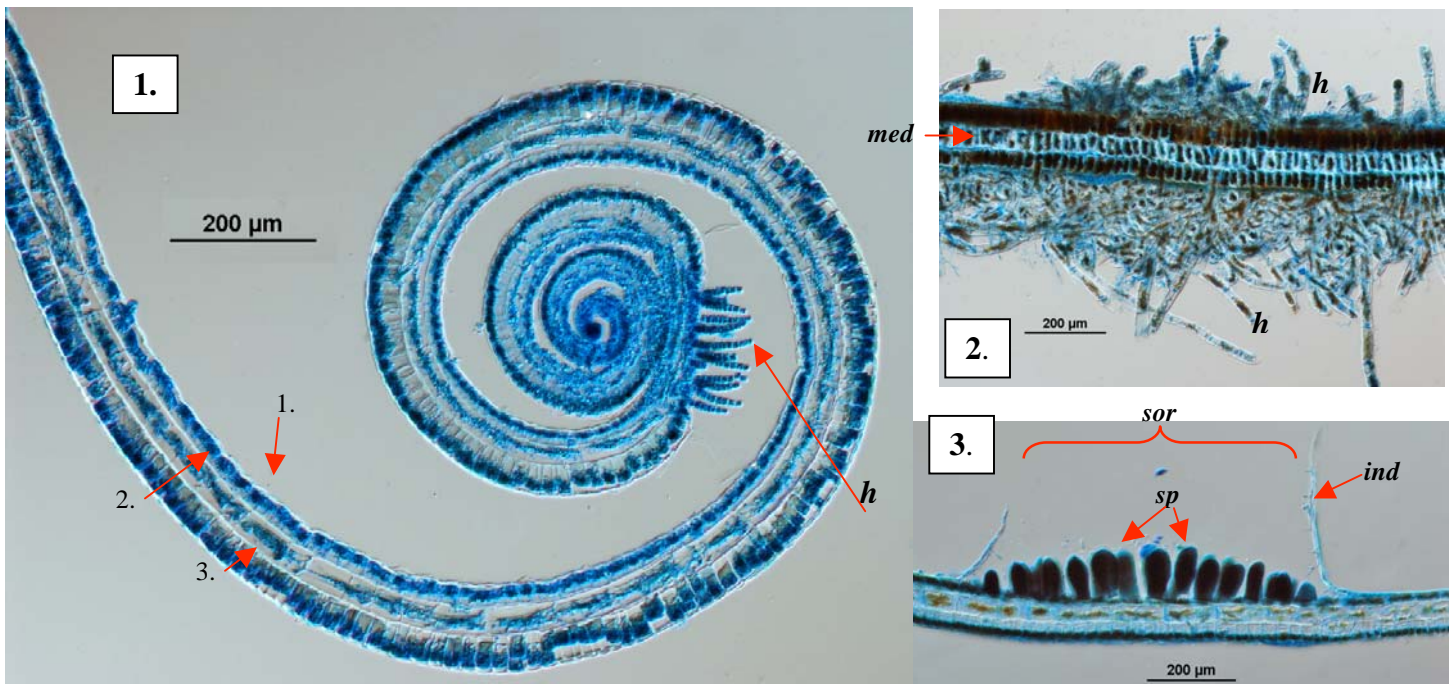
on rock, common in the lower intertidal, wave-washed pools

Similar Species

Padina sanctae-crucis, but that species has only 2 cell rows in the blade

Description in the Benthic Flora Part II, pages 217-219

Details of Anatomy



Cross sections of *Padina fraseri* stained blue and viewed microscopically

1. blade edge showing the upturned and in-rolled (circinate) edge including a band of hairs (*h*) (A51069 slide 9666)
2. showing the 3 cell rows (1,2,3), with colourless middle (medulla, *med*) containing large cells and hair tufts on **both** sides of the blade, characteristic of this species (A56877 slide 9665)
3. a patch (sorus, *sor*) of spores (*sp*), with flimsy covering (indusium, *ind*) torn aside (A51069 slide 9666)



Padina fraseri (Greville) Greville (A31758), from lower intertidal pools, Apollo Bay, Victoria