

Micropeuce proxima

(Harvey) Womersley & M J Parsons

Assigned to *Micropeuce* with some doubt

45.940.07

A SPECIES WITH FEW RECORDS



Techniques needed and plant shape

Classification

*Descriptive name

Features



Division: Rhodophyta; Family: Rhodomelaceae; Tribe: Lophothalieae
ragged tufts

plants dark red of tubular (terete) main branches (axes) with smaller side branches ending in delicate pink tufts

Special requirements



view microscopically to find

- at branch tips, delicate tufts of much branched threads (*trichoblasts*) with individual (non adherent) cell walls at branches, a feature that placing this genus in the Tribe: Lophothalieae
- in a cross section, a central filament ringed by 5 flanking (pericentral) cells a feature separating it from *Holotrichia*
- spherical cystocarps, products of fertilisation, with an opening at the tip

Occurrences

Usual Habitat

Similar Species

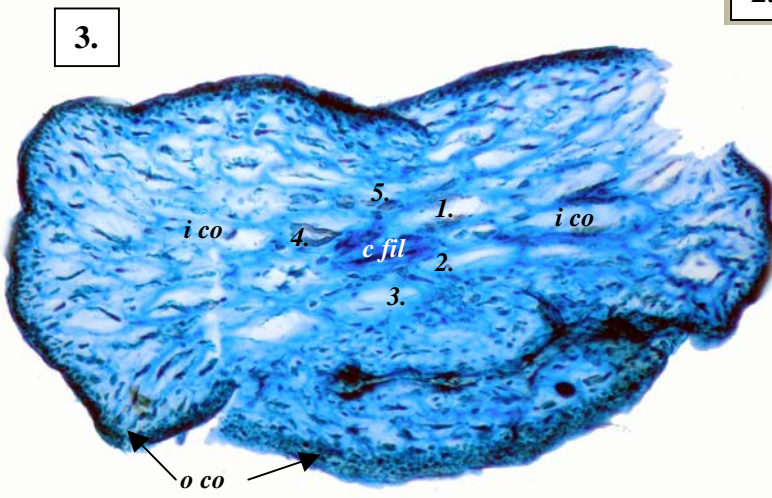
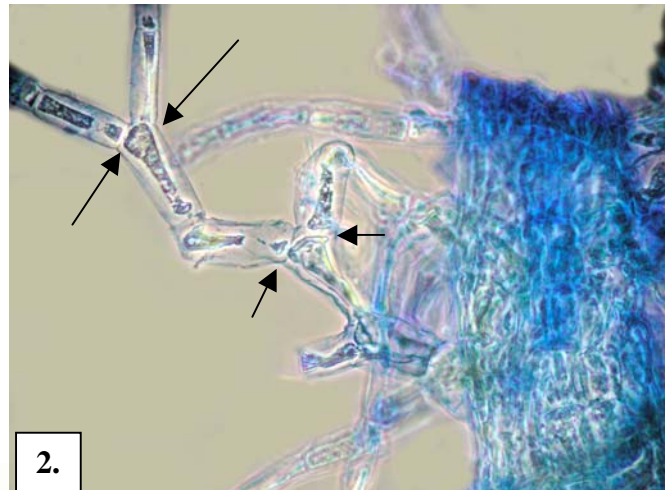
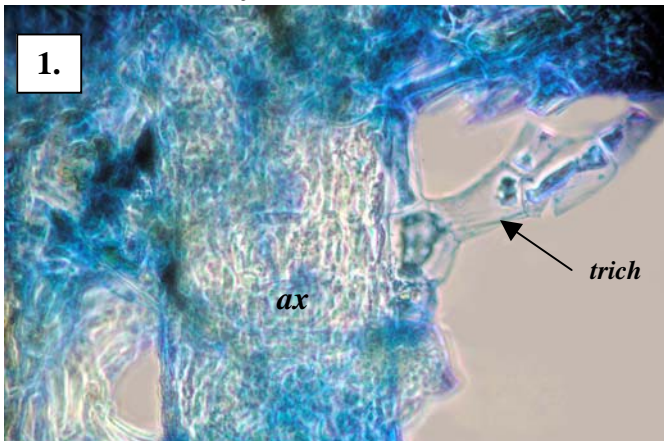
a single specimen from Middleton Bay, King George Sound W Australia

unknown

other genera of corticated Lophothalieae, and requiring mature tetrasporangia for accurate identification

Description in the Benthic Flora Part IIID, pages 254, 259

Details of Anatomy

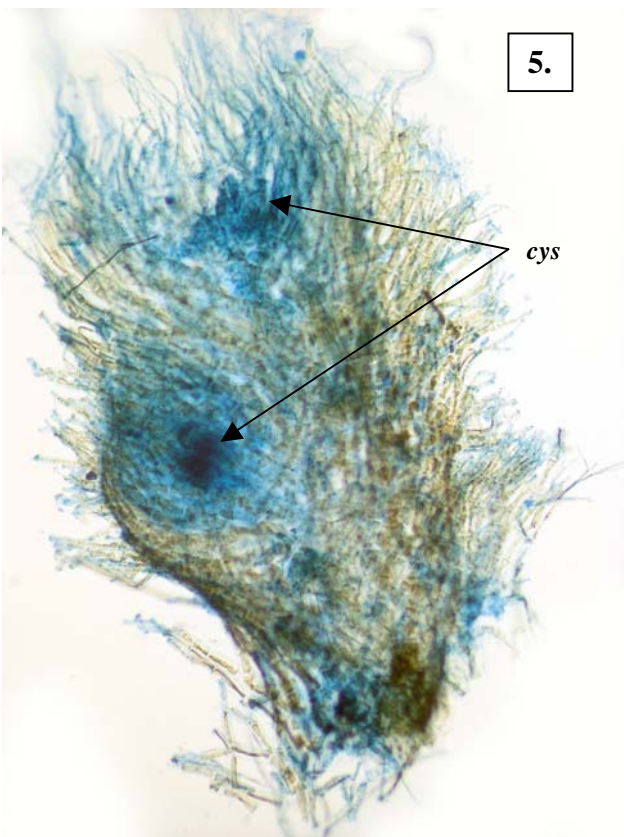


Micropeuce proxima (A18471 slide 18349) stained blue and viewed microscopically.

1. part of a heavily corticated main branch (axis, *ax*), and the base of a branched thread (trichoblast, *trich*)
2. detail of a detached piece of axis with exposed trichoblasts, showing the individual cell walls at branches (arrowed)
3. cross section of an axis, (distorted during preparation), showing a central thread (*c fil*) ringed by **five** flanking (pericentral) cells, (*1-5*) obscured because of the numbers of large inner cortical cells (*i co*); and an outer layer of small cells (outer cortex, *o co*)

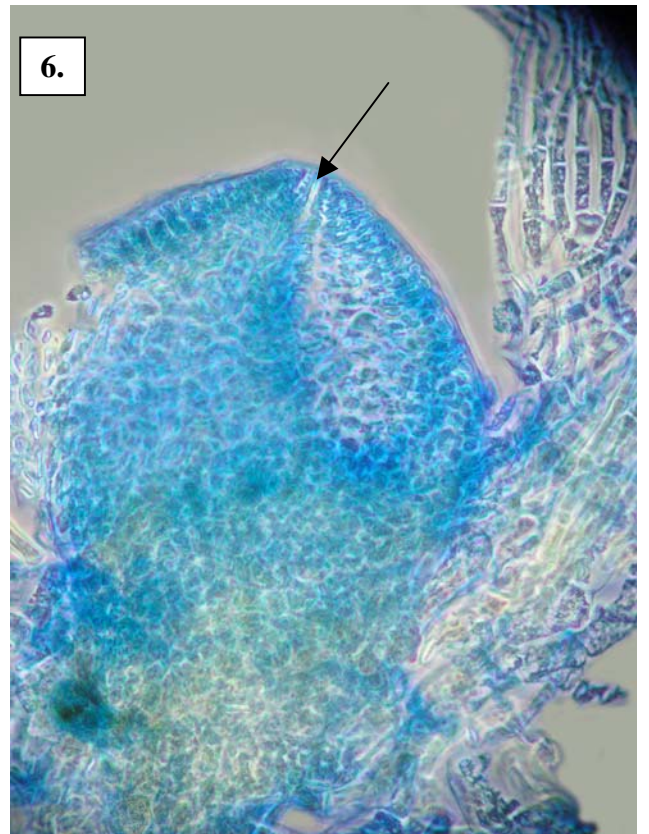


4.



5.

cys



6.

4. *Micropeuce proxima* (Harvey) Womersley & M J Parsons, A18471: a fragment of the type specimen from King George Sound, W Australia, mounted on mica
 5, 6 cystocarps (*cys*) (A18471 slide 18349) stained blue and viewed microscopically
 5. lower magnification with cystocarps partly obscured by numerous thread-like trichoblasts
 6. dissected cystocarp showing the tip with lines of cells leading to the opening (arrowed)

* Descriptive names are inventions to aid identification, and are not commonly used
 "Algae Revealed" R N Baldock, S Australian State Herbarium, May 2007