

SOUTHERN AUSTRALIAN SPECIES OF *LOMENTARIACEAE* AT A GLANCE

the coin scale is 24mm or almost 1 inch across; blue-stained images are viewed microscopically

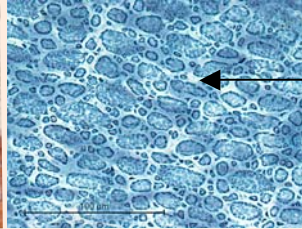
I. BRANCHES CYLINDRICAL, BRANCHING RADIAL, SURFACE CELL RINGS OBVIOUS



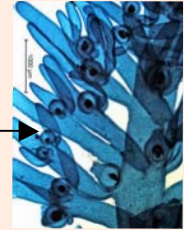
Lomentaria australis



NEW ZEALAND ?

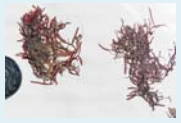


surface view of cell rings (rosettes)

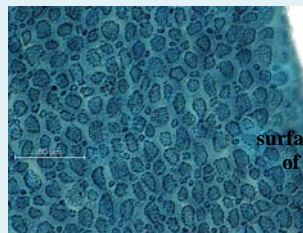


mature female structures protrude

II. BRANCHES FLATTENED, PLANTS MOSTLY FLAT-BRANCHED, CELL RINGS OBSCURE

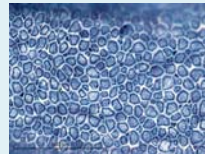


small mat-plant with creeping base



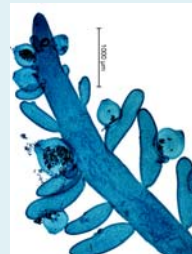
surface view of cells

Lomentaria monochlamydea

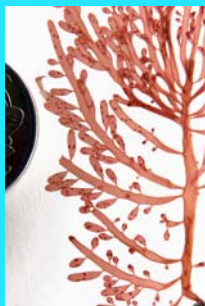


surface view of cells

mature female structures protrude

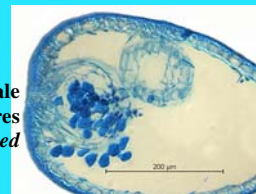


Lomentaria pyramidalis



surface view of cells

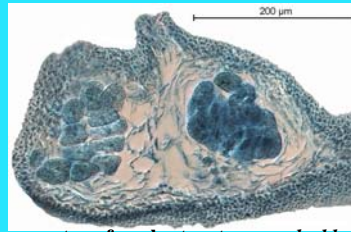
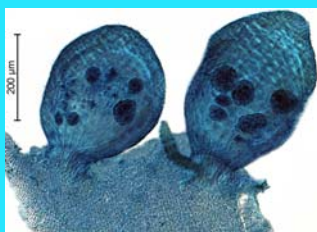
mature female structures embedded



Semnocarpa corynephora



plants tiny (1mm) on other algae & seagrasses



mature female structures embedded

Semnocarpa minuta

