

Techniques needed and shape



Classification

Division: Rhodophyta; Family: Delesseriaceae; Tribe: Delesserioideae
Group: *Hypoglossum*

***Descriptive name**

Toothed Cellophane Plant (referring to the thin blades with toothed margins)

Features



1. plants 100-250mm tall, pink to red, branches *strap-like*, filmy, **1 cell thick** except in the broad mid-line veins; microscopic **teeth**, some forked, occur at edges; side veins **absent**; branches often eroded into a central vein bearing tattered remnants of blades
2. mature female structures (cystocarps) ball-shaped, from the **midline** vein

Variations

blades covered in small discs of a pink coralline alga, *Synarthrophyton patena*

Special requirements



1. viewed microscopically, the tips of blades have a single apical cell.
2. blade edges have small, many-celled teeth, sometimes divided into 2

Occurrences

from southern W Australia to Victoria

Usual Habitat

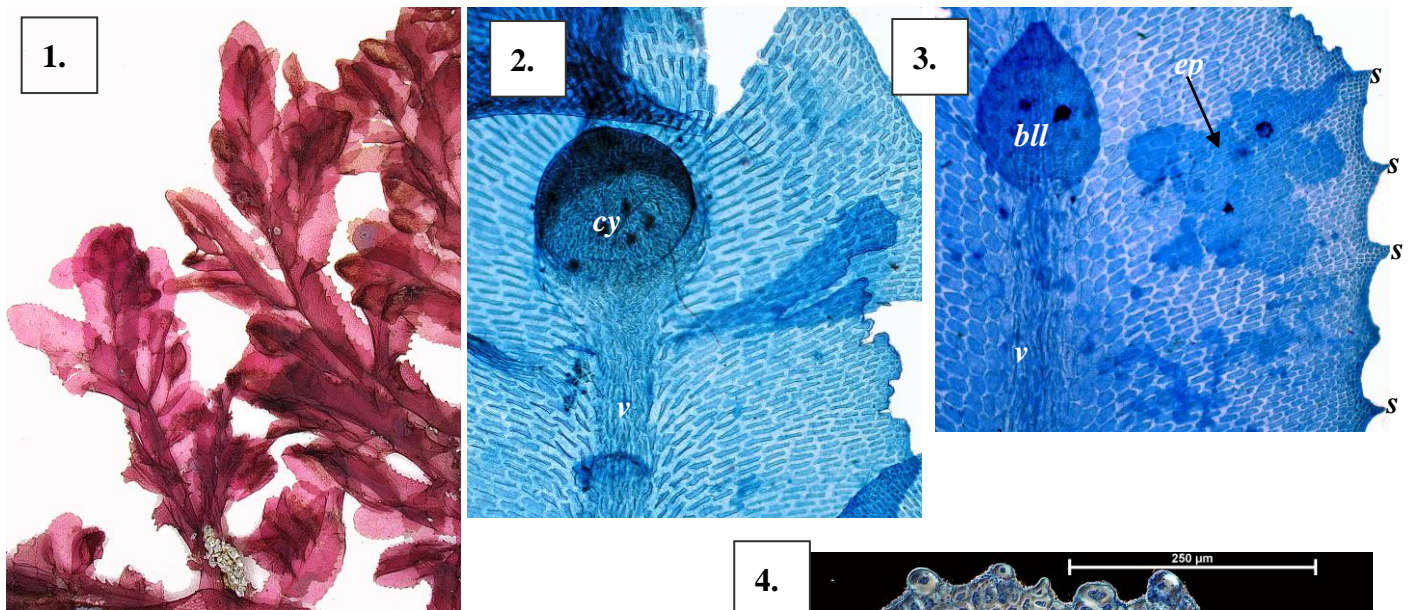
on rock, possibly a deep-water species growing in strong water movement

Similar Species

Hypoglossum harveyanum, *Hyp. protendens*. Differences in marginal outgrowths help separate the species

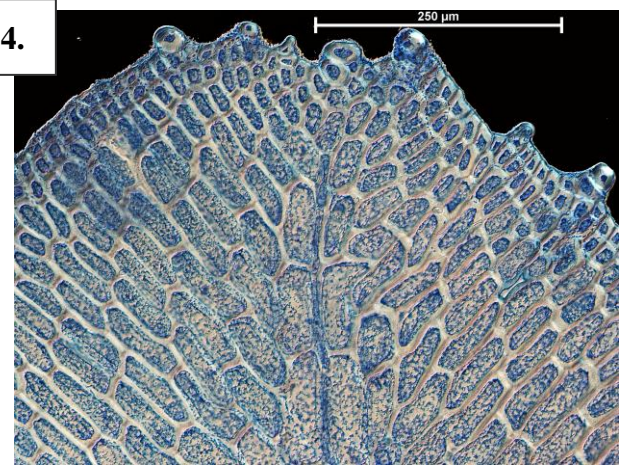
Description in the Benthic Flora Part IIID , page 52-54

Details of Anatomy



Hypoglossum armatum (#2-#4 viewed microscopically)

1. young blades arising from mid-line veins, edges serrated
2. mature blade: midline vein (v), folded blade edges, regular rows of cells, ball-shaped female structure (cystocarp, cy) arising from the vein region (slide 6642)
3. blade edge: patch of a coralline alga growing on the surface (epiphyte, ep), spiny outgrowths (s), small bladelet (bll) developing from the vein region (slide 6650)
4. blade tip: central thread and side rows of cells developing from a single apical cell (not visible in older blades); toothed blade edge (slide 6590)





5. *Hypoglossum armatum* (J Agardh) Agardh, A49380 from 23m deep, Anxious Bay (off Waldegrave I.) S. Australia. The filmy, straplike branches are heavily eroded in places, appearing then as tattered or notched blades along a flat central stalk
6. magnified detail of a mature strap-like frond: prominent mid-line vein, serrated and tattered blade edges (slide 68463)