

Techniques needed



Classification

Division: Rhodophyta; Order: Ceramiales Family: Delesseriaceae;
Tribe: Nitophylloideae; Group: *Phycodryis*

***Descriptive name**

Filmy Cellophane Plant (delicate flat fronds that lack veins)

Features

1. plants are rose-red colour
2. blade margins have **coarse teeth**
3. flat, narrow branches (blades) are very **thin**
4. side branching is irregular, from the **edges** of main branches
5. blades have **no veins**



Special requirements



1. blades grow from **single cells** at the tips or edges of blades
2. blades are **one cell thick** (monostromatic)

Usual Habitat

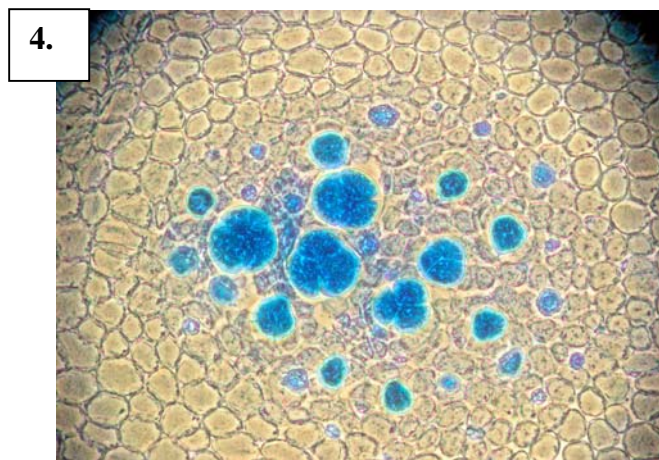
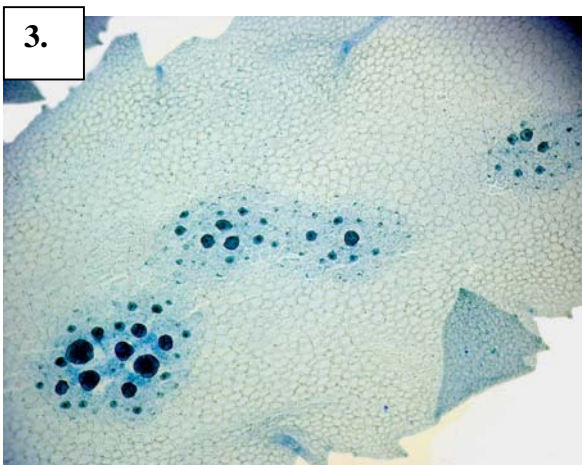
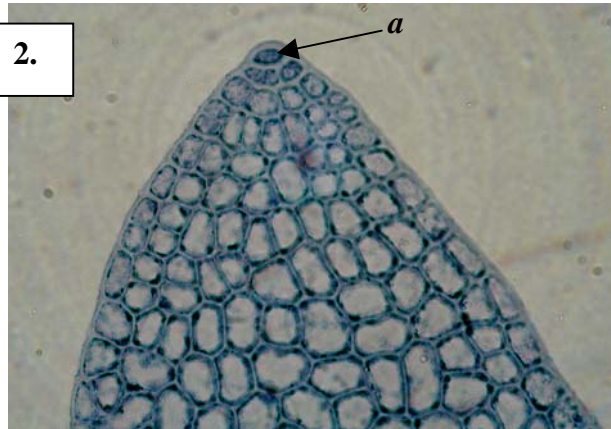
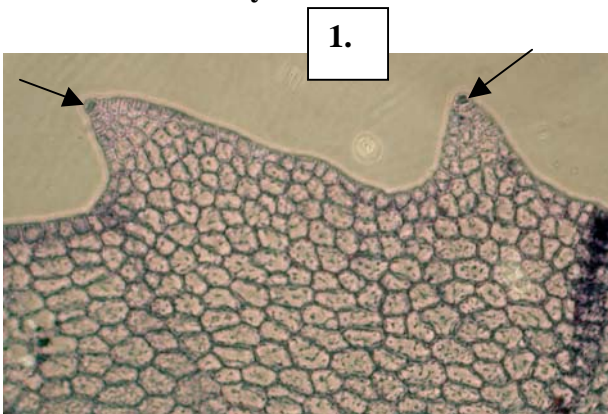
only known from calm waters in American River, Kangaroo Island and not collected recently

Similar Species

other foliose members of the Delesseriaceae that have toothed margins such as *Heterodoxia* but the blade in *Haraldia* is a single cell thick and there are no veins

Description in the Benthic Flora Part IIID , page 67-69

Details of Anatomy

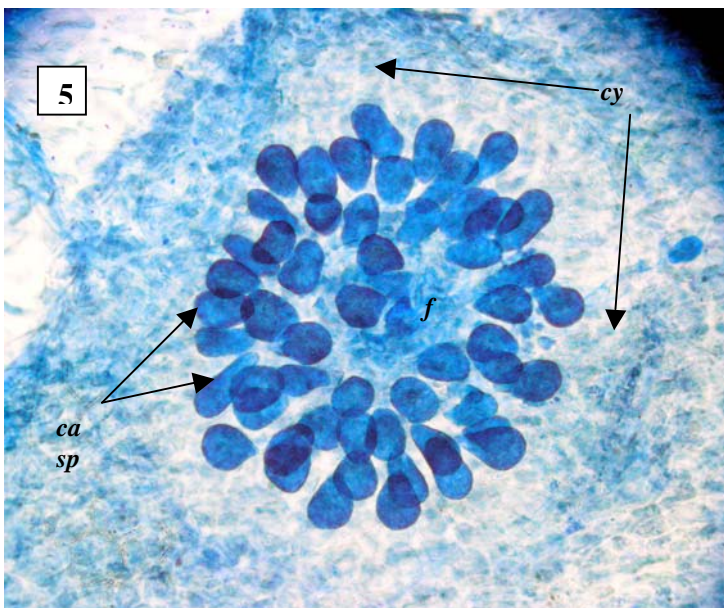


Various magnifications of *Haraldia australica*, stained with aniline blue

1. slide 764: detail of spines on the edge of a blade that is 1 cell layer thick (monostromatic)
2. slide 764: detail of a blade tip showing the apical cell (*a*) that divides forming irregularly arranged cells and no veins
- 3/4 A 31571 slide 17769: two magnifications of clusters (sori) of tetrahedrally divided tetrasporangia

* Descriptive names are inventions to aid identification, and are not commonly used
Prepared March 2003, updated October 2005; additions made April 2007

Haraldia australica Womersley A15370k:
From shallow water, American River Inlet, Kangaroo I., S Australia



5. *Haraldia australica* A 15370 slide 17648, stained blue and viewed microscopically: surface view of a cystocarp (cys), showing club shaped carposporangia (ca sp) at the margins (terminal) of a small fusion cell (fc)

* Descriptive names are inventions to aid identification, and are not commonly used
Prepared March 2003, updated October 2005; additions made April 2007