

Techniques needed and plant shape



Classification

Phylum: Rhodophyta; Order: Gigartinales; Family: Cystocloniaceae

***Descriptive name**

red threads

Features



plants dark red, 40-120mm tall, branches very narrow (*linear*), *forked* (dichotomous) or irregularly branched, *cylindrical* (terete) female cystocarps appearing as tiny balls on upper branches

Special requirements



view branch tips microscopically to find

- in surface view, single, *protruding* apical cells and a weak pattern of smaller cells in rings (*rosettes*) about cells in older parts
- in cross sections, single, *central threads* (filaments) and large equal-sided (“*parenchymatous*”) cells in the core (medulla) with *small* cells facing outwards in surface (cortical) layers
- ball-shaped cystocarp with mass of small cells forming spores *in chains*. (difficult to see) in cross section

Occurrences

only recorded for Port Phillip Heads, Victoria and Port Noarlunga, S. Australia probably growing on other algae,

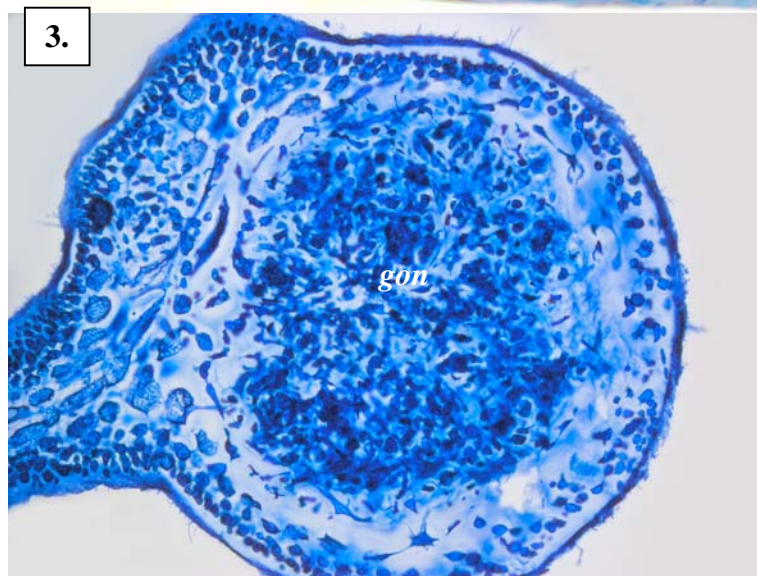
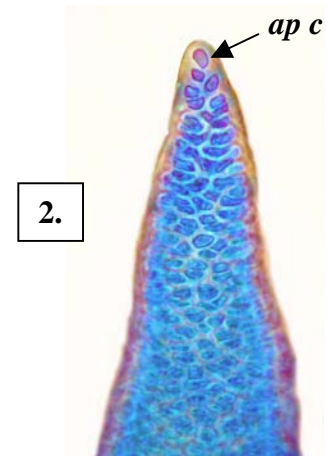
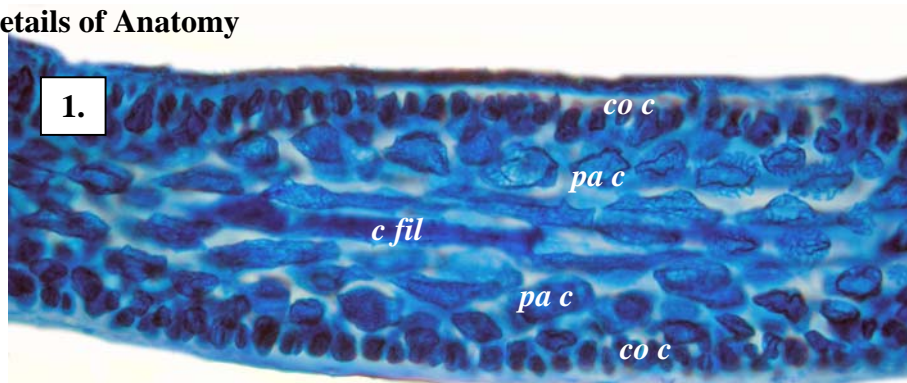
Usual Habitat

Similar Species

Hypnea spp, but these often have spines or special curved branches with flattened ends and surface cell rosettes are *absent*

Description in the Benthic Flora Part IIIA, pages 432, 434-436

Details of Anatomy

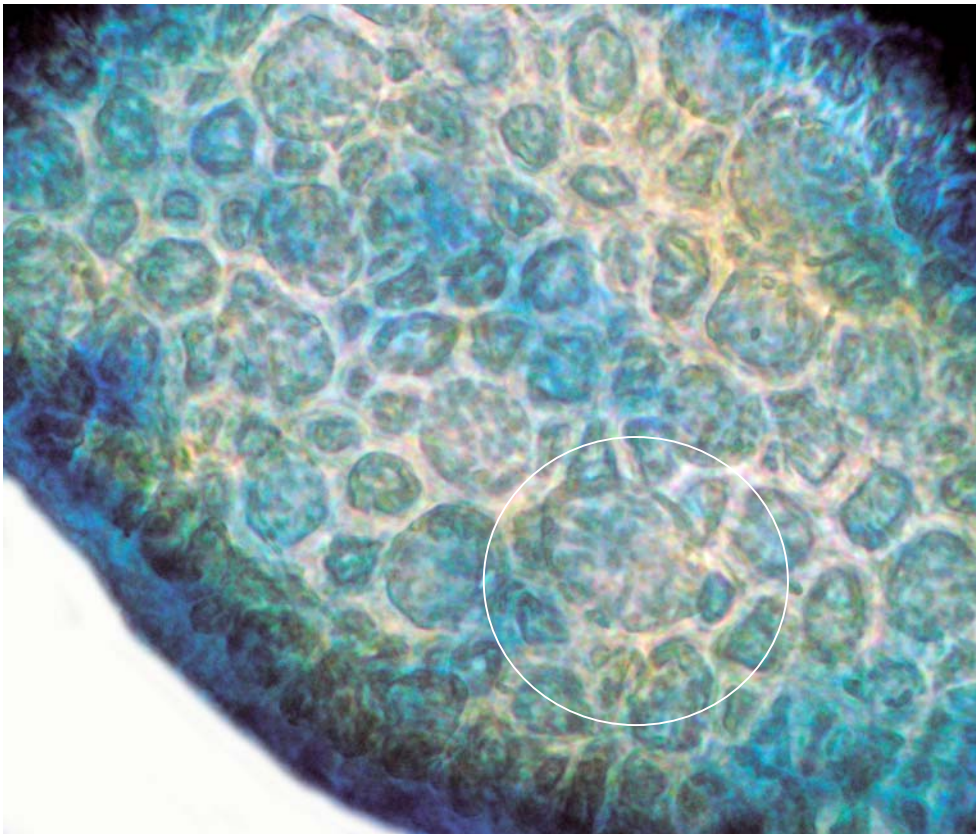


Erythronaema ceramioides, A61795, stained blue and viewed microscopically at different magnifications

1. cross section, showing central thread (*c fil*), large, equal-sided cells (parenchymatous cells, *pa c*) of the core (medulla) layer, smaller surface cells (cortical cells, *co c*) (slide 13240)
2. branch tip, with single, protruding apical cell (*ap c*) (slide 13320)
3. cross section through a cystocarp, showing the firm wall (pericarp) and central mass of small cells (gonimoblast, *gon*) (slide 13241)



4.



5.

4. *Erythronaema ceramioides* J. Agardh, A61795, from Port Noarlunga, S. Australia
5. surface view of a branch stained blue and viewed microscopically showing vague cell rings (rosettes) (one series marked) (A61795, slide 13320)

* Descriptive names are inventions to aid identification, and are not commonly used
"Algae Revealed" R N Baldock, S Australian State Herbarium, November 2005