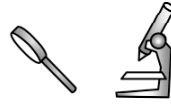
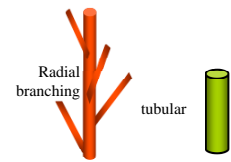


Enteromorpha (Ulva) clathrata
(Roth) Greville

50.470



MACRO
PLANT



Techniques needed and plant shape

Classification

Phylum: Chlorophyta; Order: Ulvales; Family: Ulvaceae

*Descriptive name

green hair-plant

Features



plants light green, 20-80mm tall, much branched irregularly from the base, of *thin* threads 1-3mm wide, cylindrical or slightly flat

Variations

variable in thread width, can be loosely attached in calm regions, threads sometimes unbranched

Special requirements



view the branches microscopically to find:

1. cells relatively large, box-shaped always in *more* than 1 line of cells along *hollow* threads
2. chloroplasts often occupy only a *part* of the cell, have toothed edges and 2-4 bright spots (pyrenoids)

Occurrences

worldwide in temperate moderate to calm seas

Usual Habitat

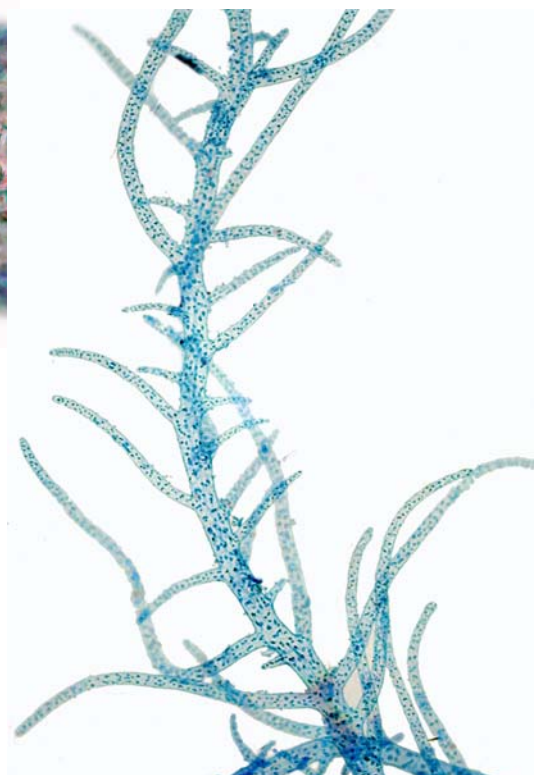
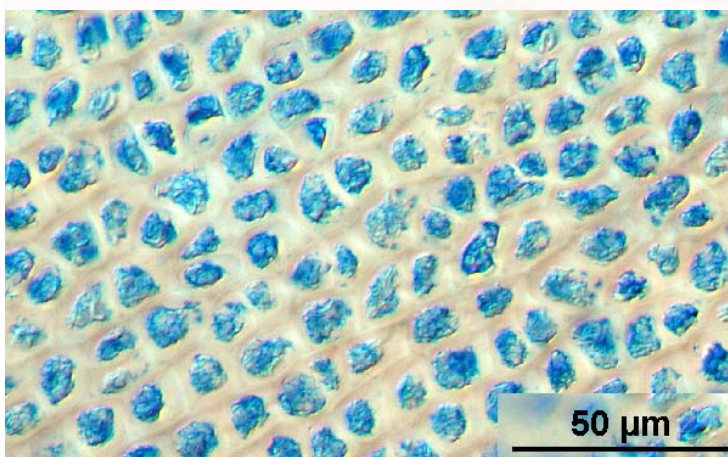
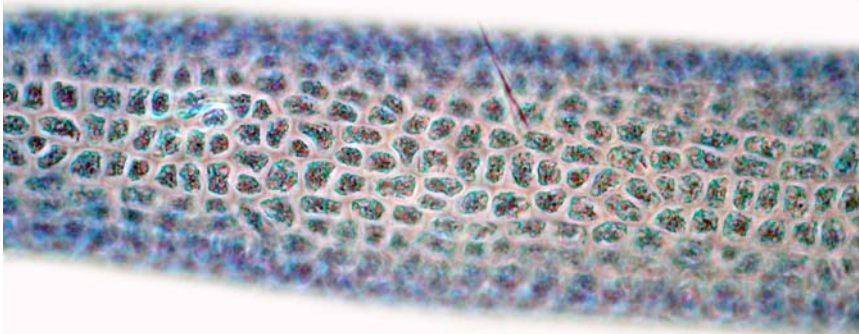
in the intertidal and shallow water

Similar Species

superficially like many filamentous species, especially *Enteromorpha paradoxa* but that species has numerous, *opposite*, fine side branches of a *single* line of cells

Description in the Benthic Flora Part I, pages 157-160

Details of Anatomy



Enteromorpha clathrata (A6510 slide 7570) stained blue and viewed microscopically

1. cell detail of a cylindrical side branch, showing the several lines of cells
2. branching pattern showing irregular side branches containing several lines of cells (pluriseriate)
3. cell detail showing the jagged edges to some chloroplasts



forms of *Enteromorpha clathrata*
(Roth) Greville

4. an attached plant (A54573)
5. fine, detached hair-like form
(A3343b)