

Dilophus fastigiatus

(Sonder) J. Agardh

Now considered as *Dictyota fastigiata* Sonder



Some workers consider this genus should be sunk into *Dictyota*

34.390

Techniques needed



Classification

Division: Phaeophyta; Family: Dictyotaceae; Tribe: Dictyoteae

*Descriptive name

Brown Linguini weed (referring to the texture and shape of the blades)

Features

1. dark brown, flat, **narrow** blades, 3-7mm broad
2. blades have an elastic texture
3. up to **10cm** between forked (dichotomous) branching occurs

Variations

some basal fringes grow if the plant is heavily grazed

Special requirements



Diagnosis can be difficult



1. investigate the tips microscopically to find the single apical cell
2. cut a slice across older blades. The middle (medulla) has 2 cell layers (4 in older parts), the outer (cortex) consists of 1 layer of small cells

Usual Habitat

widespread on hard surfaces up to 21m deep, and often cast up, from southern W Australia to Victoria

Similar Species

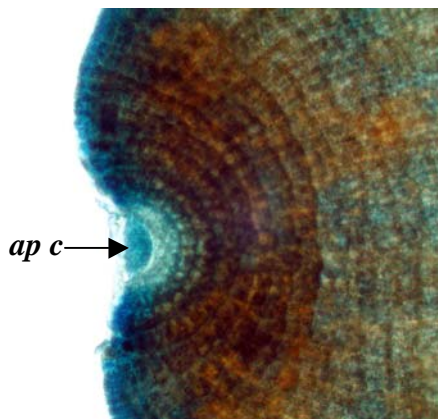


Dilophus gunnianus, but blades are narrower and branches closer together towards the tips in this species. Specimens of these 2 species from the West Coast can easily be confused

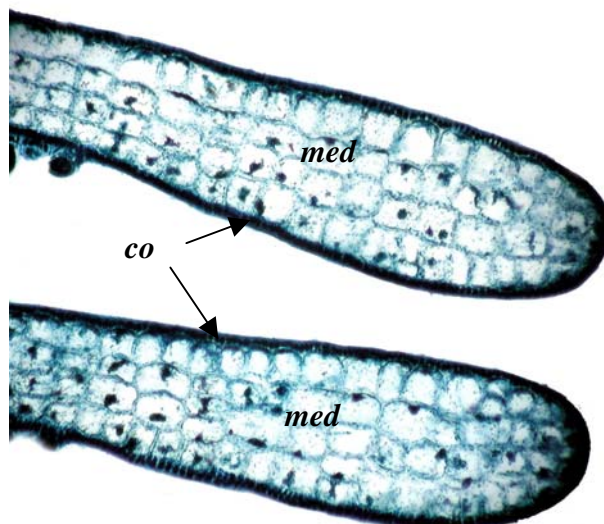
Phillips (1992) included *Dilophus angustus* in *Dilophus fastigiatus*, now *Dictyota fastigiata*

Description in the Benthic Flora Part II, page 206-208

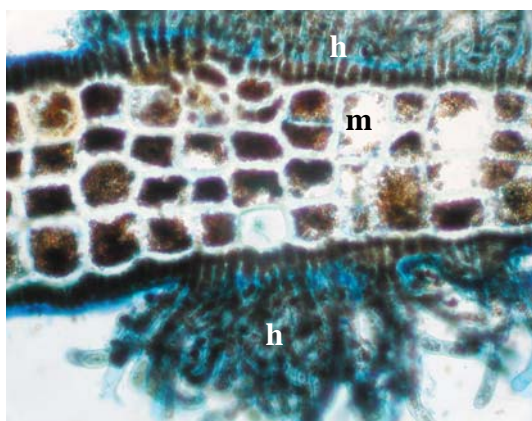
Details of Anatomy



Left:
Lens-shaped apical cell (*ap c*) in a slight depression 9537



Above:
Cross section of two blade edges. The several layers of large, colourless middle (medulla, *med*) cells and the single layers of small coloured outer (cortical, *co*) cells are visible 9537



Left:
Details of cells in a slice across a blade. The several layers of middle (medulla, *med*) cells can be seen and tufts of multicellular hairs (*h*) on either side of the branch 9537

* Descriptive names are inventions to aid identification, and are not commonly used
Prepared July 2003; additions July 2007



Dilophus fastigiatus (Sonder) J. Agardh
A18978, a drift plant from
Port MacDonnell, S Australia

Dilophus fastigiatus