



Techniques needed and plant shape

Classification

Phylum: Phaeophyta; Order: Dictyotales; Family: Dictyotaceae

*Descriptive name

fibre-tipped *Dilophus*

Features

plants brown, flat, to 60mm tall, with narrow forked branches tipped with *fibres*

Occurrences

only known from a single collection from Rottneet I., W. Australia. This may be merely an *abnormal* specimen, a result of regeneration of damaged tips

Special requirements



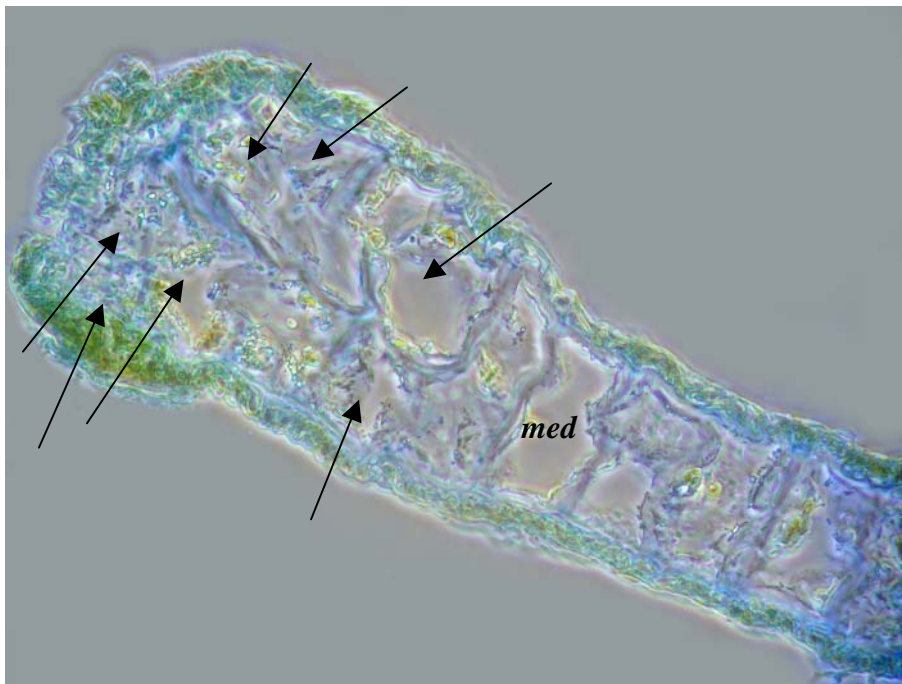
1. investigate the tips microscopically to find the single apical cell
2. slice across a blade to view the *single* row of large middle (medulla) cells and *swollen edge* with 2-3 rows of cells which places it in the genus *Dilophus*
3. view the unusual tendril- or *fibre-like* threads, slightly flattened, at the branch tips

Similar Species

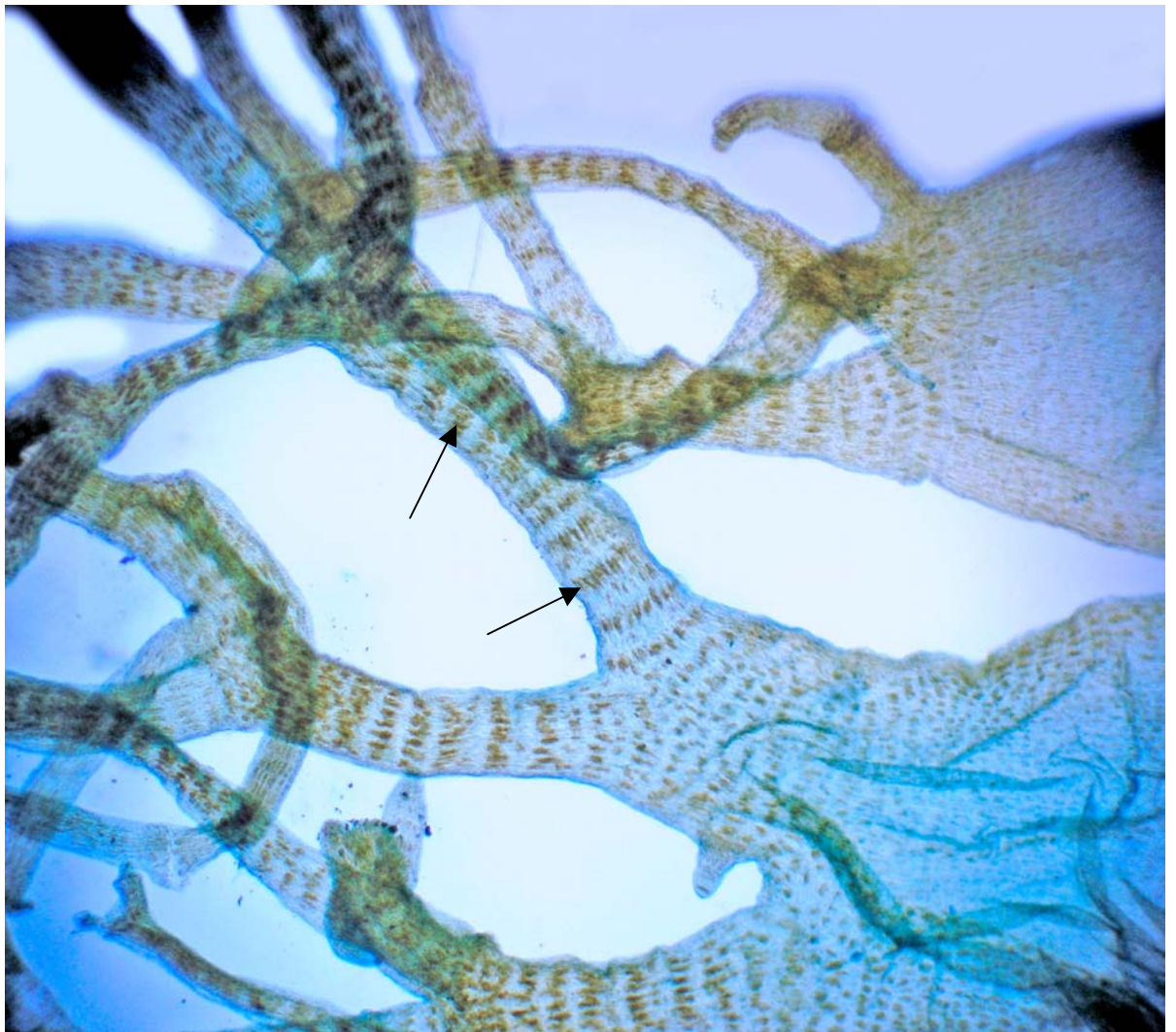
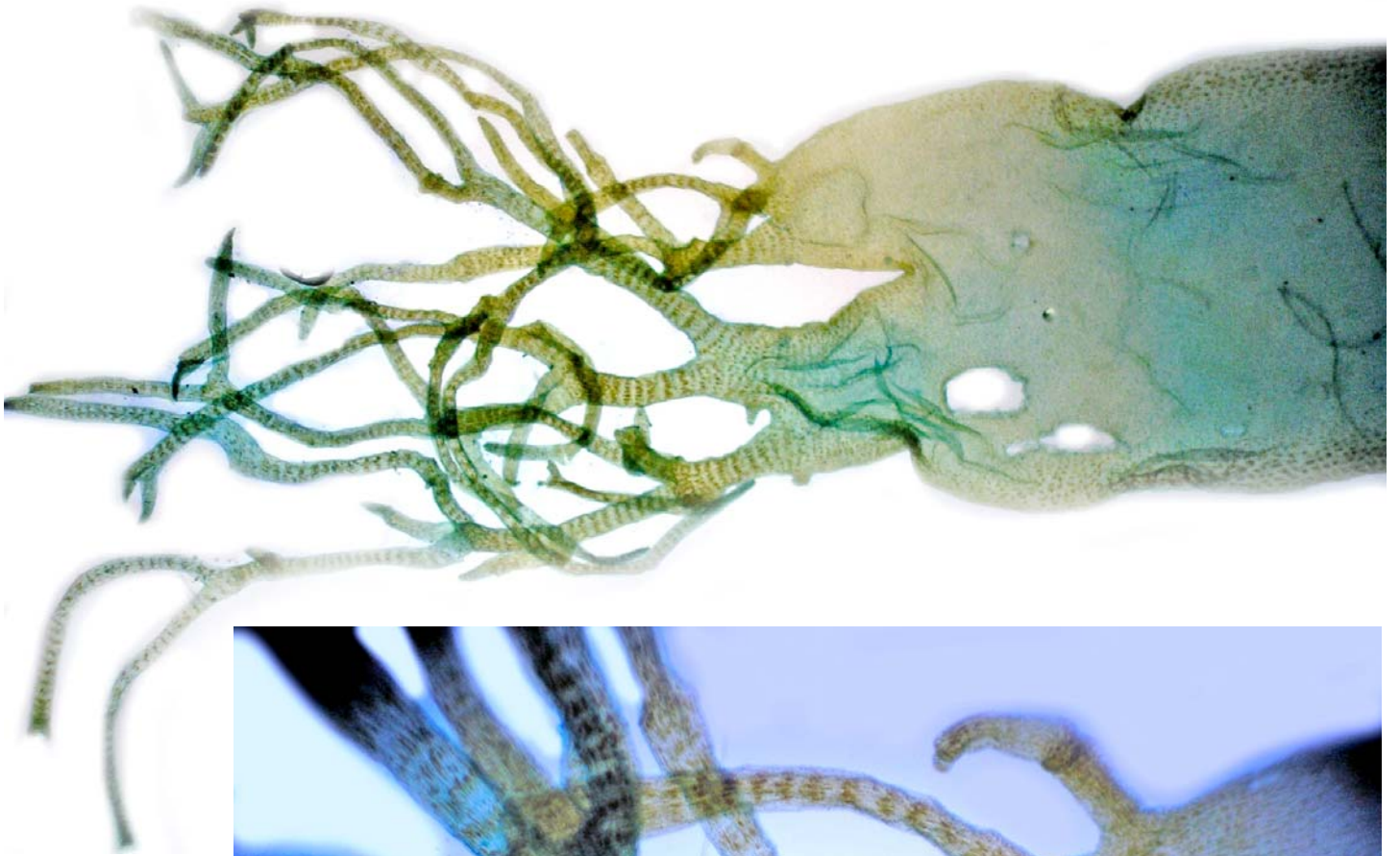
other species of *Dilophus* especially *D. tener*

Description in the Benthic Flora Part II, pages 205-207

Details of Anatomy



Cross section of a blade of *Dilophus crinitus* (A18579, slide 9522) from a fragment of a plant on the original sheet, showing the single central (medullary, *med*) layer of large cells in the centre of the blade, but several large cells (arrowed) at the swollen edge.



Two magnifications of a piece of *Dilophus crinitus* J. Agardh, (A18579, slide 9522) stained blue, showing the flat, forked fibres at the tip of a blade, and rows of hairs (arrowed)