

MICRO
PLANT



Techniques needed and plant shape

Classification

Phylum: Chlorophyta; Order: Siphonocladales; Family: Valoniaceae

***Descriptive name**

marine ice-plant; §liverwort seaweed

Features



plants consist of shallow, *stiff*, cup-shaped or wavy blades, 1-cell thick, attached beneath by rhizoids, with many large, cells protruding from the surface, giving blades a *glistening* appearance

Special requirements



view the blade surface microscopically to see:

1. large protruding cells *girdled* by rings of smaller cells
2. chloroplasts numerous, without pyrenoids, forming a net

Occurrences

Rottneest I. W.A. to Victoria and N coast of Tasmania

Usual Habitat

in shaded parts of the lower intertidal, to deep water on rough coasts

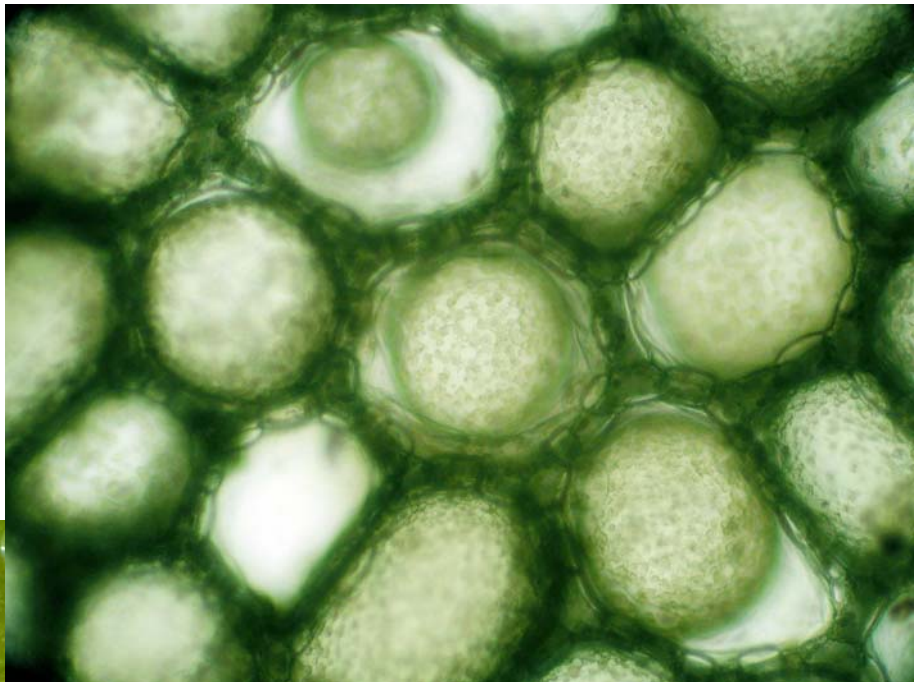
Similar Species

readily separated from small plants of *Ulva* (Sea lettuce) because of its stiff texture, and unusual mixture of large cells just visible to the unaided eye, held together by a network of microscopic cells

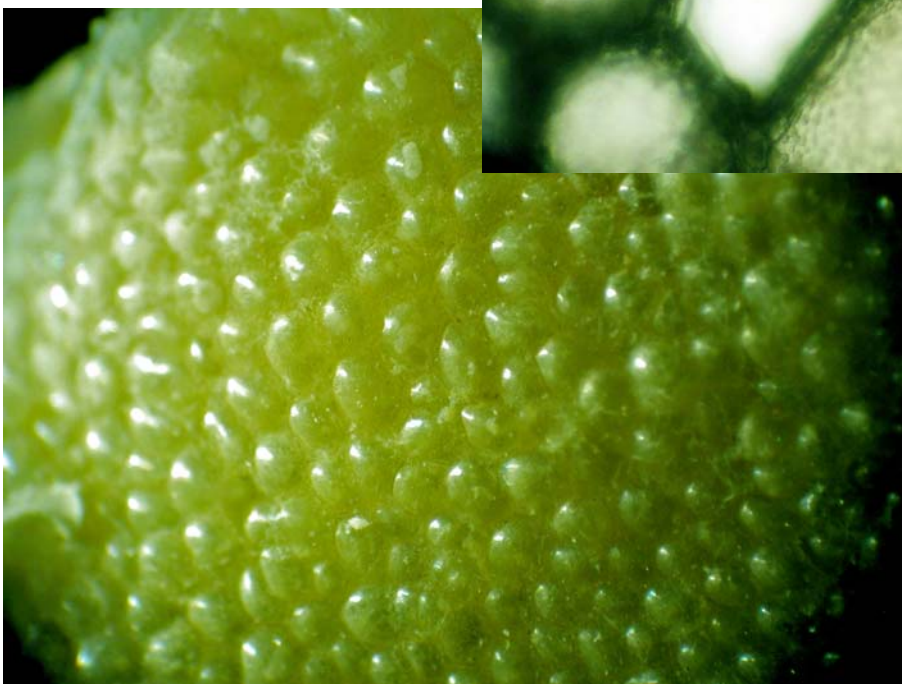
**Description in the Benthic Flora
Details of Anatomy**

Part I, pages 222-224

1.



2.



Surface microscope views of *Dictyosphaeria sericea* (A53381) from Victor Harbor, S Australia
1. large cells held together by a rings of smaller cells forming
2. protruding cells, just visible to the unaided eye that catch the light

* Descriptive names are inventions to aid identification, and are not commonly used

§ name used in Edgar, G. *Australian Marine Life*, 2nd Ed. (2008)

“Algae Revealed” R N Baldock, S Australian State Herbarium, October 2003



Dictyosphaeria sericea Harvey,
growing amongst articulated
coralline red algal turf, and
Sargassum plants, in shallow
water, Aldinga reef, Feb. 2006.

Image: R N Baldock



Dictyosphaeria sericea Harvey, in
close up.

Image: D Muirhead



Dictyosphaeria sericea Harvey,
from Pt Willunga

Image: R N Baldock

* Descriptive names are inventions to aid identification, and are not commonly used
§ name used in Edgar, G. *Australian Marine Life, 2nd Ed.* (2008)
“Algae Revealed” R N Baldock, S Australian State Herbarium, October 2003