

CLADOPHORA SPECIES AT A GLANCE

a series of Fact Sheets in several parts

GROUP I. PLANTS UN-ATTACHED, BALL-SHAPED/CLUMPED OR TURF SPECIES

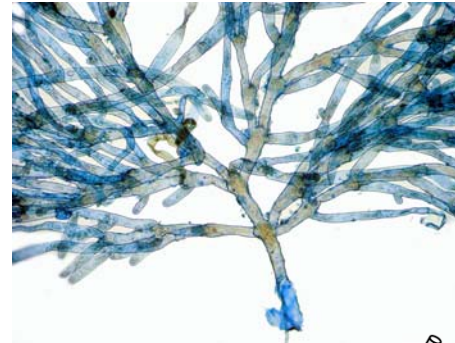
1. *Cladophora*

aegagropiloidea
van den Hoek &
Womersley
— Moss balls

Key features

- A. free-floating balls
- B. opposite, stiff branching;
- C. thick walls; side branches inserted below end of the cell bearing them, walls slightly wavy
- D. sometimes branch direction is reversed

A A12607, Bay of Shoals, Kangaroo I., S.A.



B A12607 slide 6726



C

2. *Cladophora*

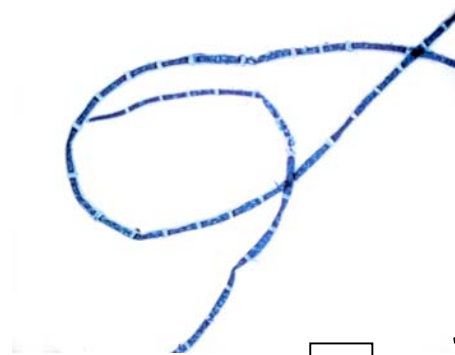
rhizoclonioidea
van den Hoek &
Womersley
— Green hair

Key features

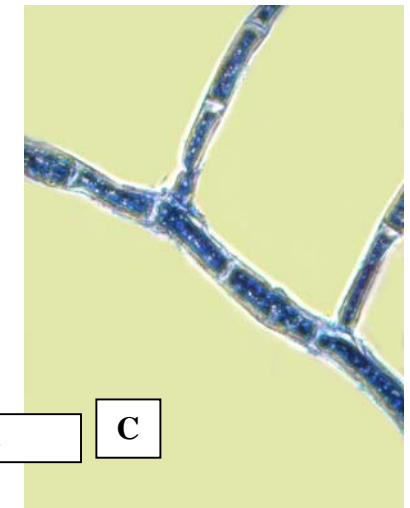
- A. hair-like, tangled threads
- B. few, *curved* branches
- C. thin walls; side branches at 90°
- D. sometimes branch direction reversed



A A57023, in the upper intertidal, Warrnambool, Victoria



B A52833 slide



C

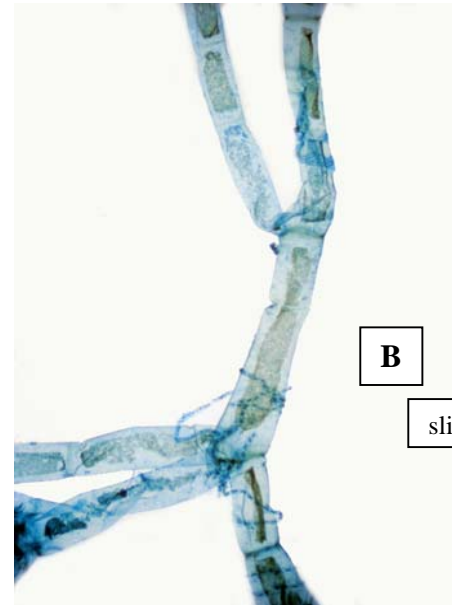
3. *Cladophora coelothrix*
Kützing
— Green mats

Key features

- A. plants consist of dense mats or cushions
B. **wide** cells, **>80µm wide**, many with L/B > 5
C. apical cells **elongate** (L/B = 3-16)



A A15182b, in shallow water, Louth Bay, S.A.

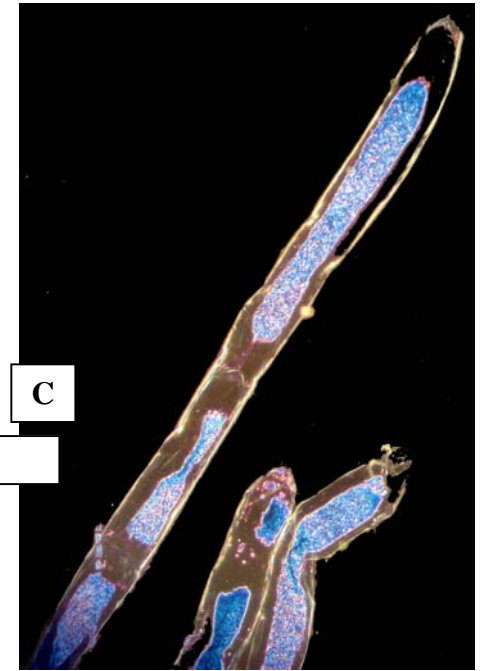


B



C

slide 6684



4. *Cladophora subsimplex*
Kützing
— Green cushions

Key features

- A. small cushions or tufts
B. **narrow** cells, **<80µm wide**, many with L/B > 6; runner-like threads with erect side branches
C. apical cells with a **conical point** (L/B = 2-6)



A

A52691, in the mid intertidal, Stinky Bay, Nora Creina, S.A.



B

slide 6687

C

