

## CLADOPHORA SPECIES AT A GLANCE

a series of Fact Sheets, in several parts

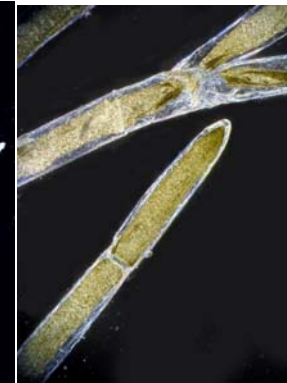
### GROUP II. PLANTS ATTACHED OR FLOATING BUT WITH DISTINCT UPPER & LOWER PARTS BASAL CELLS LONGER THAN UPPER ONES

1. *Cladophora prolifera*  
(Roth) Kützing

— Coarse green tufts

**Key features**

- A. plants dark green (drying brown)
- B. branching equally towards the tips
- C. **wide** apical cells, >100µm wide, L/B = 3-13
- D. constrictions occur near the junction of lower branches; branch insertions are **not** angled



A4720



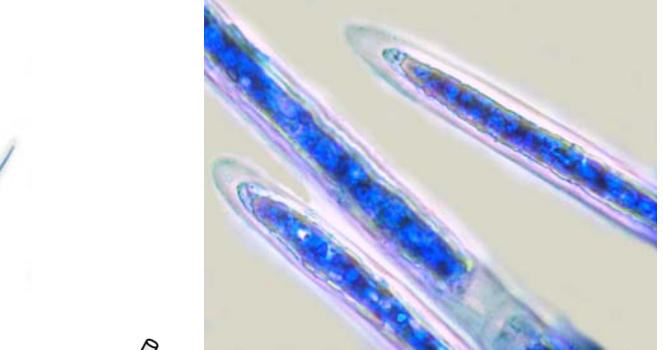
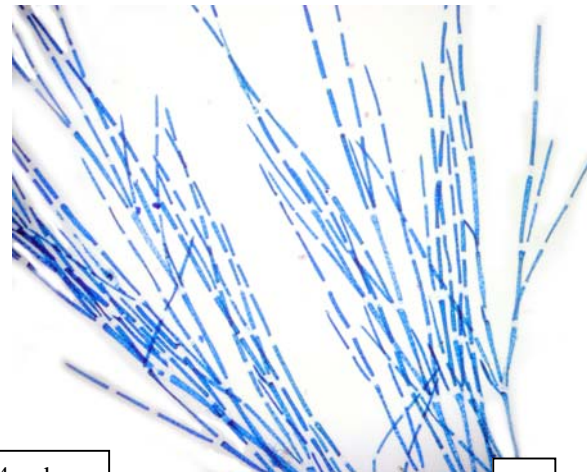
2. *Cladophora bainesii*

Müller & Harvey

— Deepwater Green tufts

**Key features**

- A. plants with delicate tufts, arising from a single basal cell
- B. branching is delicate, tufted, cell L/B = 6-17
- C. **narrow** apical cells, 14-25µm wide with a clear, conical cap, L/B = 7-24



A52103 slide 6623



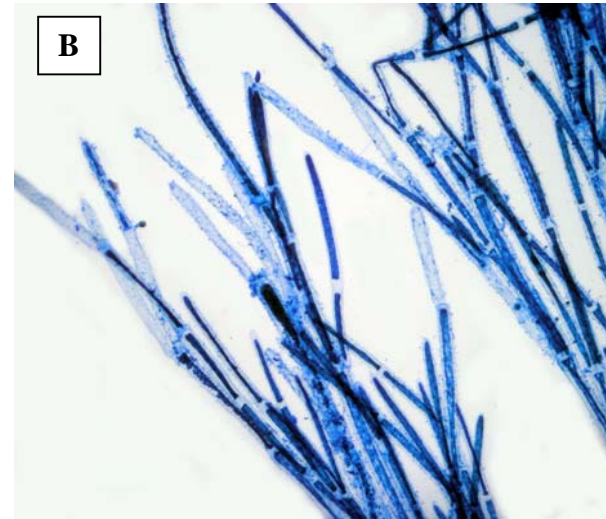
3. *Cladophora feredayi*  
 Harvey  
 — Green tufts

**Key features**

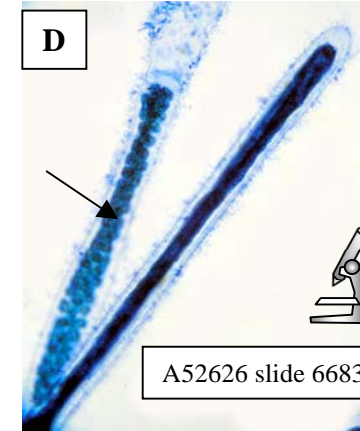
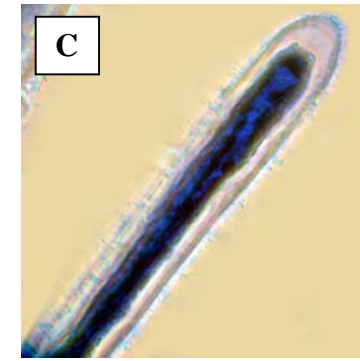
- A. dense tufts, usually **several** main branches arise from the plant base
- B. tufts are coarser than *C. bainesii*; cell L/B = 6-25
- C. **wide** apical cells, **50-110µm** wide, blunt or with a conical point, L/B = 6-25
- D. cells containing gametes (one is arrowed) occur along the threads



A54303, a drift plant from Pt McDonnell, S.A.



A52626 slide 6683



A52626 slide 6683