

Caulerpa vesiculifera

Harvey

50.650



MACRO PLANT



Techniques needed and plant shape

Classification

Phylum: Chlorophyta; Order: Bryopsidales; Family: Caulerpaceae

*Descriptive name

bumpy-stemmed caulerpa; §beaded caulerpa


Features

1. plant green to dark green, 80-350mm tall
2. upright, branches (axes), sometimes forked, arise from a runner
3. dense, **swollen**, egg-shaped bladders (ramuli), 1.0-2.5mm long point outwards from the upright branches



Special requirements



view microscopically a cross section to see 7-9 bladders around an upright branch, **pinched** basally and attached by a **swelling** (conical pedicel)  This may be difficult to see or only slight in some specimens

Occurrences

W Australia through southern Australia and Tasmania

Usual Habitat

in rock pools and shallow water to 25m deep on rough water coasts

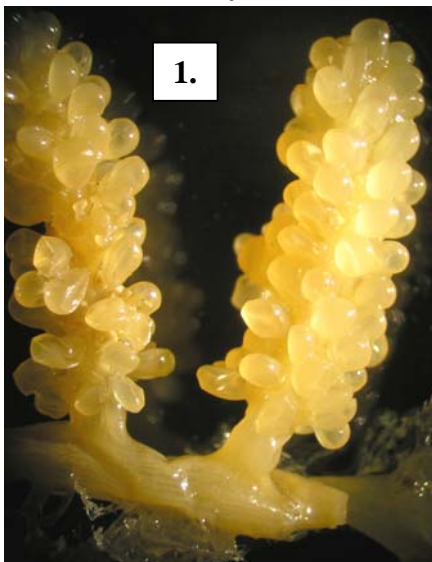
Similar Species

Caulerpa simpliciuscula but that species has **smaller** and more **numerous** bladder-like ramuli around an upright branch, **not** attached by a conical pedicel

Description in the Benthic Flora

Part I, pages 271, 272-273

Details of Anatomy

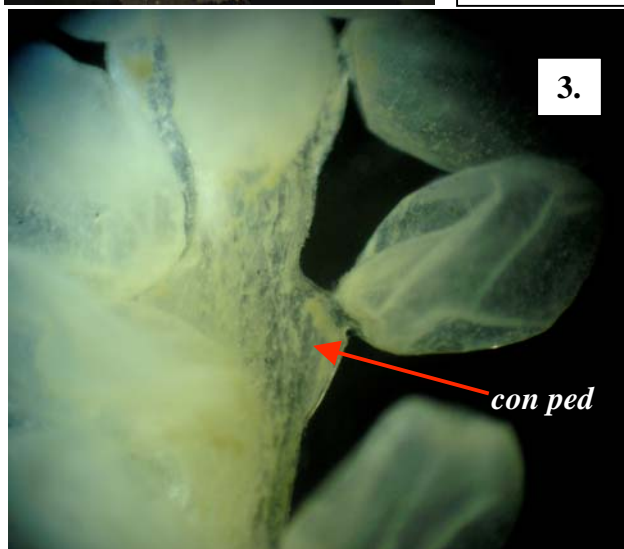


1.

2.



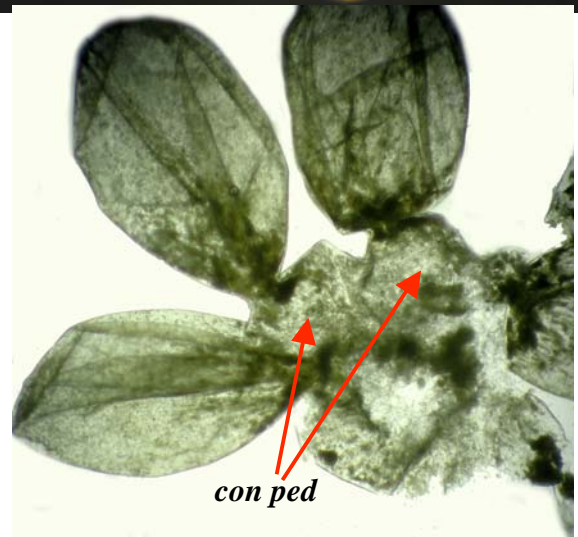
1, 2. two magnifications of a preserved (bleached) specimen (A30734), from Pt Peron W. Australia) showing small upright branches covered in bladdery ramuli, arising from a robust runner



3.

con ped

4.



con ped

3, 4. a preserved (bleached) specimen (A19392), viewed microscopically to show the bumps (conical pedicel. *con ped*) to which the bladdery ramuli attach
3. side view 4. partial cross section

* Descriptive names are inventions to aid identification, and are not commonly used

§ name used in Edgar, G. *Australian Marine Life*, 2nd Ed. (2008)

“Algae Revealed” R N Baldock, S Australian State Herbarium, August 2005

5.



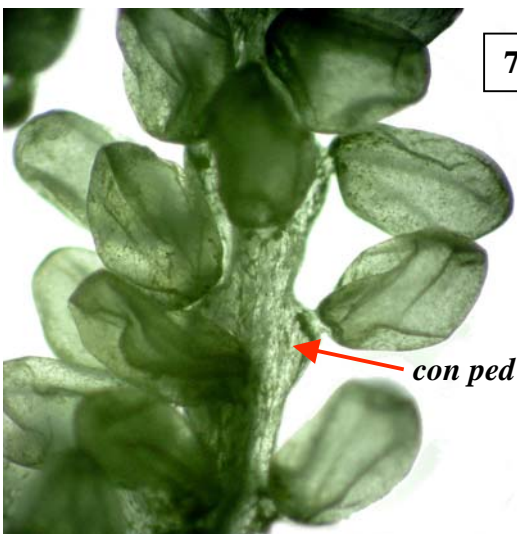
5, 6. Two magnifications of *Caulerpa vesiculifera* Harvey (A32487) from Elliston, West coast, S. Australia, showing the bumpy surface of upright branches produced by dense, bladder-like ramuli

7. a preserved (bleached) specimen (A19392), from Elliston, S. Australia viewed microscopically to show bladdery ultimate branches (ramuli) and a bumps (basal pedicel. *bas ped*) to which the bladdery ramuli attach

6.



7.



* Descriptive names are inventions to aid identification, and are not commonly used
 † name used in Edgar, G. *Australian Marine Life, 2nd Ed.* (2008)
 "Algae Revealed" R N Baldock, S Australian State Herbarium, August 2005