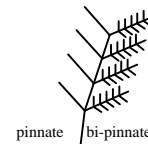


*Callophycus costatus*  
(Harvey) Silva

Techniques needed and shape



MACRO  
PLANT



Classification

Phylum: Rhodophyta; Order: Gigartinales; Family: Areschougiaceae

\*Descriptive name

veined and serrated red sea fern (§ sea fern-a name used by Huisman for *Callophycus*)

Features

1. plants are dark red, 100-300mm tall, with *several* sturdy, flat main upright branches (axes) **4-5mm** wide with a central vein
2. side branches are *flat-branched*, oppositely branched, often with *toothed edges*

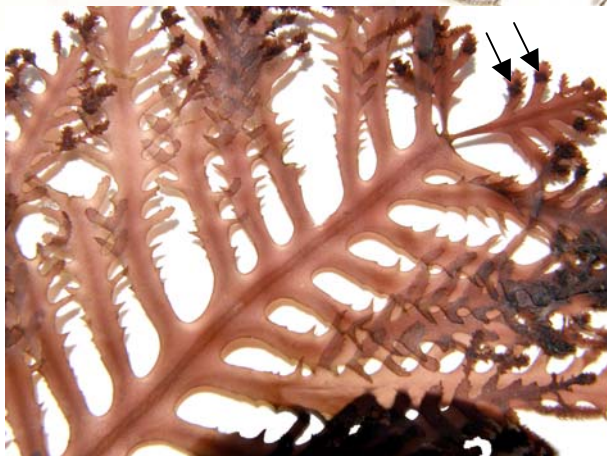
Occurrences



**sub-tropical distribution**; W Australia and Queensland; see Huisman & Walker (1990) A catalogue of the marine plants of Rottnest Island, Western Australia, with notes on their distribution and biogeography. *Kingia*: 349-459. This abbreviated Fact Sheet is included in case the species is found in the southern Australian province in the future.

Description in the Benthic Flora

not included



Two views of Western Australian specimens of *Callophycus costatus* (Harvey) Silva

1. A31199 from Garden I., under reef ledges
2. A51117 from Rottnest I., 1-2m deep, magnified to show:
  - the prominent central vein
  - fainter veins in the side branches
  - serrated or toothed margins
  - cystocarps (arrowed) in small branches

Descriptive names are inventions to aid identification, and are not commonly used  
§name used by Edgar, G (2008) in Australian Marine Life (2<sup>nd</sup> ed.).

“Algae Revealed” R N Baldock, S Australian State Herbarium, January 2008