

Anotrichium elongatum
(Harvey) Baldock

45.800.68

Techniques needed and shape



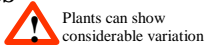
Classification

Phylum: Rhodophyta; Order: Ceramiales; Family: Ceramiaceae;
Tribe: Griffithsiae

***Descriptive name**

fine red threads

Features



plants soft, light to dark red 20-300mm tall, densely forked or tufted, main branches often tangled together, of cells just visible to the unaided eye, about 6 times longer than wide from near Albany, W Australia to Western Port, Victoria

Occurrences

Usual Habitat

Special requirements

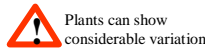
common in the lower intertidal to 38m deep attached by rhizoids to rock, seagrass or algae

view microscopically to find



- branches coming *gradually* to a point; apical cells *elongate*; downward growing rhizoids, usually near the base
- in sporangial plants: tetrasporangia single on small stalks (*pedicels*) usually in *clusters* of 3-7 on *one side* of the upper ends of cells near the branch tips
- mature *basket-shaped* female structures (cystocarps) towards the ends of branch tufts each with a swollen basal cell bearing a ring (*involucre*) of 4-6 incurved cells
- in male plants: spermatangia in *head-shaped masses* on club-shaped stalks (*pedicels*)

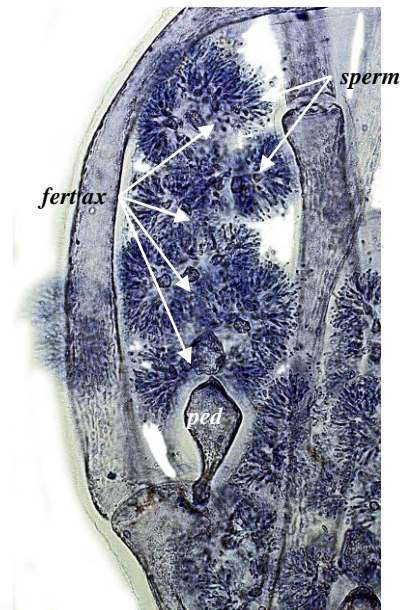
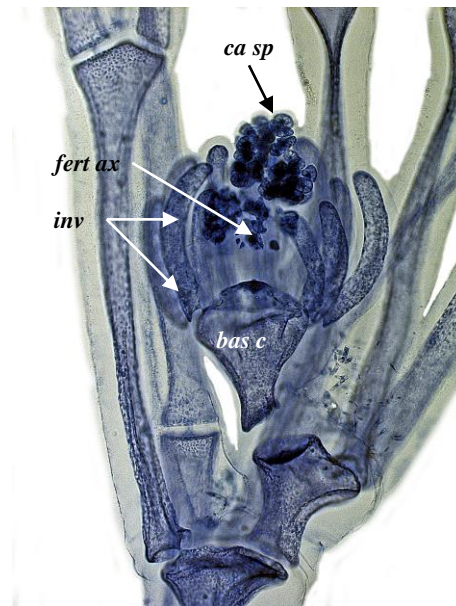
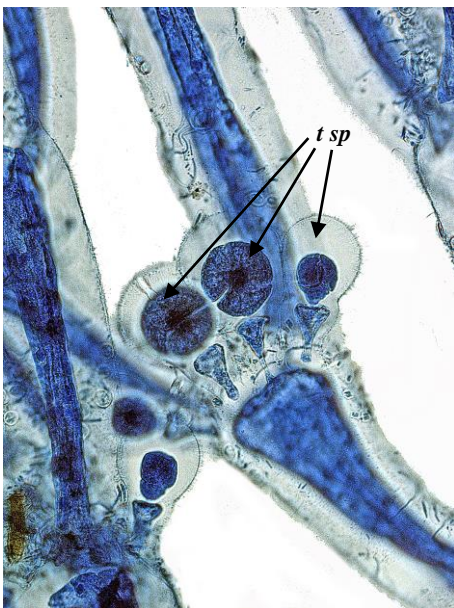
Similar Species



A. elongatum is variable and intergrades with *A. crinitum* and *A. licmophorum*, often requiring reproductive stages, particularly of tetrasporangia, for correct identification

Description in the Benthic Flora Part IIIC, pages 351, 352-354

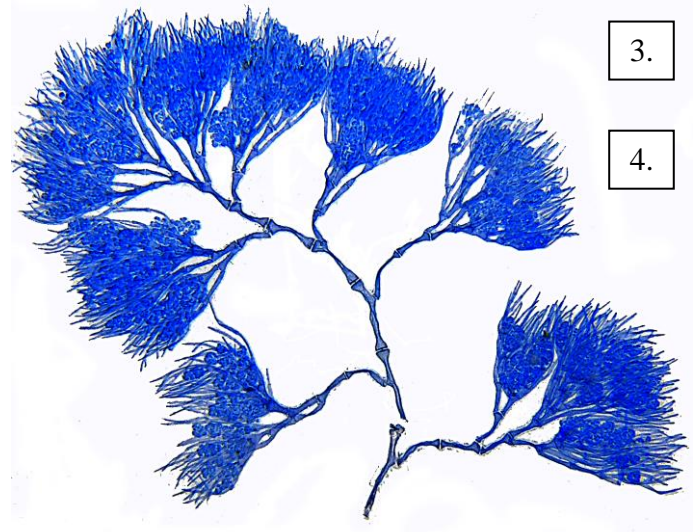
Details of Anatomy



1.

2.

- Anotrichium elongatum* stained blue and viewed microscopically at different magnifications:
1. sporangial plant: elongate cells, group of stalked tetrasporangia (*t sp*) on one side of a branch fork (slide 5651)
 2. mature female structure (cystocarp) (slide 3139): inflated basal cell (*bas c*), ring of in-turned cells (involucre, *inv*), central string of fertile cells (*fert ax*), clusters of spores (carpospores, *ca sp*)
 3. male plant (slide 3143) with a spermatangial head: stalk cell (pedicel, *ped*), central string of fertile cells (*fert ax*), clusters of spermatangia (*sperm*)
 4. from Pennington Bay, Kangaroo I., S Australia: elongate cells of main branches, regular alternating tufts (slide 31391), resembling *A. licmophorum*



* Descriptive names are inventions to aid identification, and are not commonly used
"Algae revealed", R N Baldock, State Herbarium S Australia, November 2007; revised July 2014

5.



6.



7.



8.



Anotrichium elongatum (Harvey) Baldock, plant forms in S Australia:
 5. from Blackfellows Caves, near Port MacDonnell (A67858) – a large, dark plant with regular, alternating and spreading end tufts, resembling *A. licmophorum*
 6. from West Beach Robe (A27860) – a small plant with twisted threads ending in irregular tufts
 7. from Robe, in the lower intertidal (A63206) – a small, light red, finely branched plant resembling *A. subtile*
 8. off the Coorong, 22.8m deep (A71803) - a coarse, sparsely fork-branched specimen resembling sterile *A. crinitum*

* Descriptive names are inventions to aid identification, and are not commonly used
 "Algae revealed", R N Baldock, State Herbarium S Australia, November 2007; revised July 2014