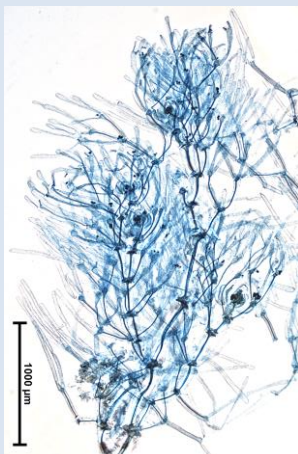
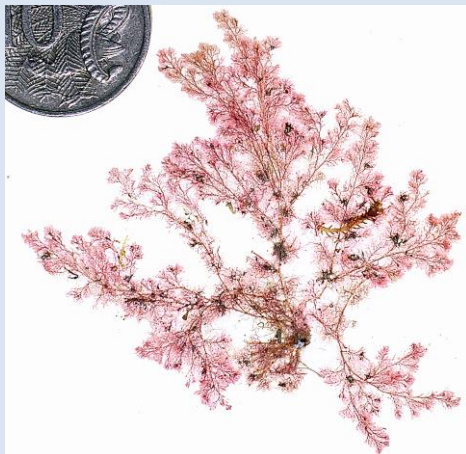


SOUTHERN AUSTRALIAN SPECIES OF *ANOTRICHUM* AT A GLANCE

(magnified cell detail may be stained blue)

I. SIDE BRANCHES ARISE IN 3'S FROM EACH AXIAL CELL



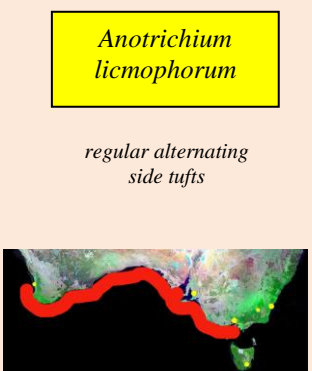
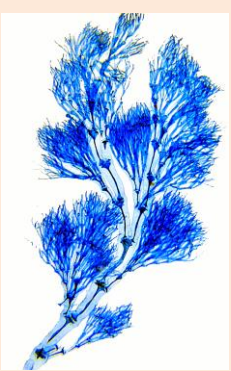
Anotrichium towinna

rare plant

side branches in rings of 3's



II. ALL BRANCHES FORKED



Part II continued next page



Anotrichium subtile

rare plant

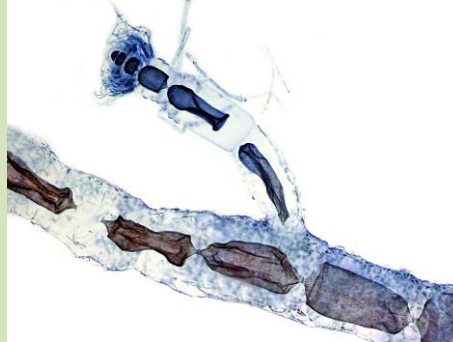
extremely fine, forked threads



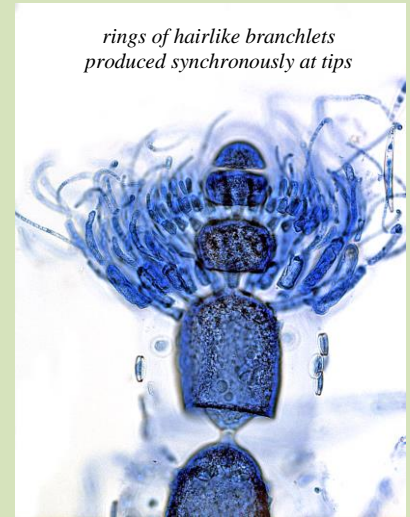
III. PLANTS FORM TURFS WITH CREEPING AND UPRIGHT THREADS



Anotrichium tenue
var. *thysigerum*



widespread in temperate & mixed-temperate waters worldwide



rings of hairlike branchlets produced synchronously at tips