

# SOUTHERN AUSTRALIAN SPECIES OF ACROTYLACEAE AT A GLANCE

## I. Blades forked, and flat or foliose

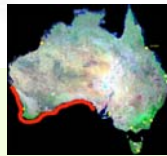
*Acrotylus australis*



detail of tips ending in a single apical cell



*Hennedya crispa*



detail of "crisped" or crinkled



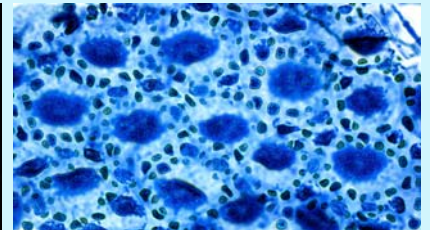
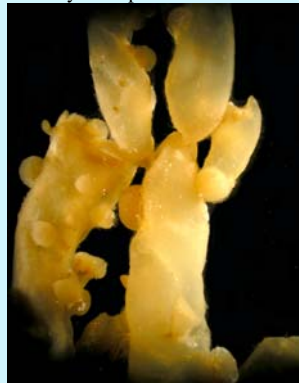
microscope surface view of rosettes

## II. Branches compressed

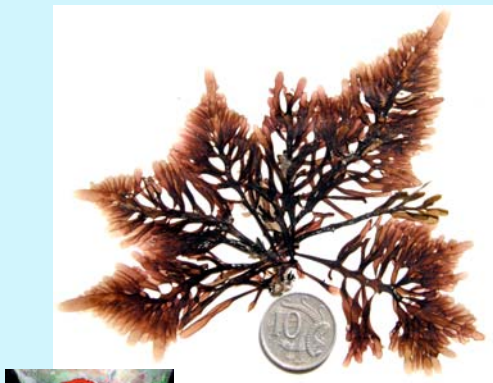
preserved (bleached) specimens; of tips with cystocarps



*Amphiplexia hymenocladoides*



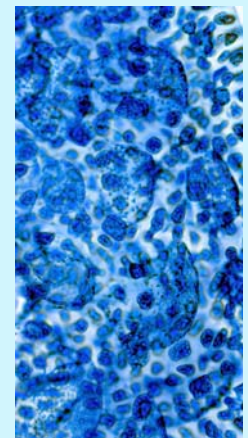
microscope view of surface cell rosettes stained blue



*Amphiplexia racemosa*

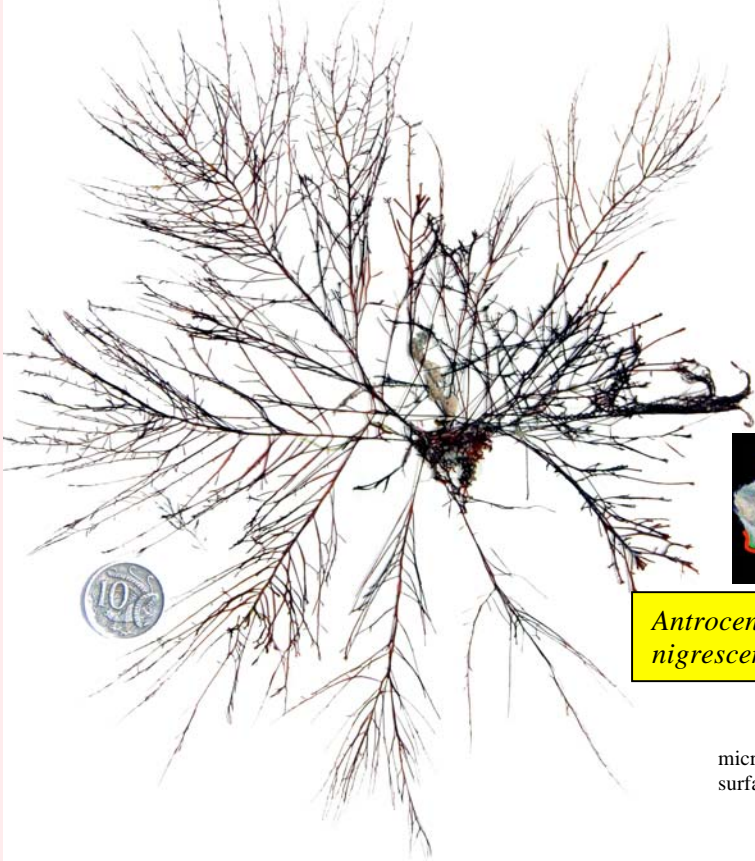


preserved (bleached) specimen; of tips with cystocarps

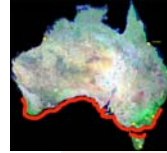


microscope view of surface cell rosettes stained blue

III. Branches narrow, slightly compressed

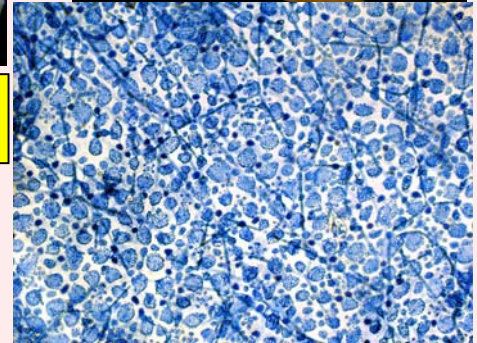


preserved  
(bleached)  
specimen:  
detail of  
tips



*Antrocentrum  
nigrescens*

microscope view of  
surface cell rosettes  
stained blue



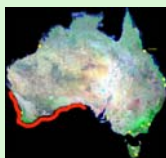
IV. Side branches balloon-shaped



preserved  
(bleached)  
specimen;  
detail of  
branches



*Clavilonium ovatum*



lengthwise  
section through a  
branch joint  
(node)

